



Offers In Excess Of  
£225,000

Rushes Walk

Godmanchester, PE29 2DJ

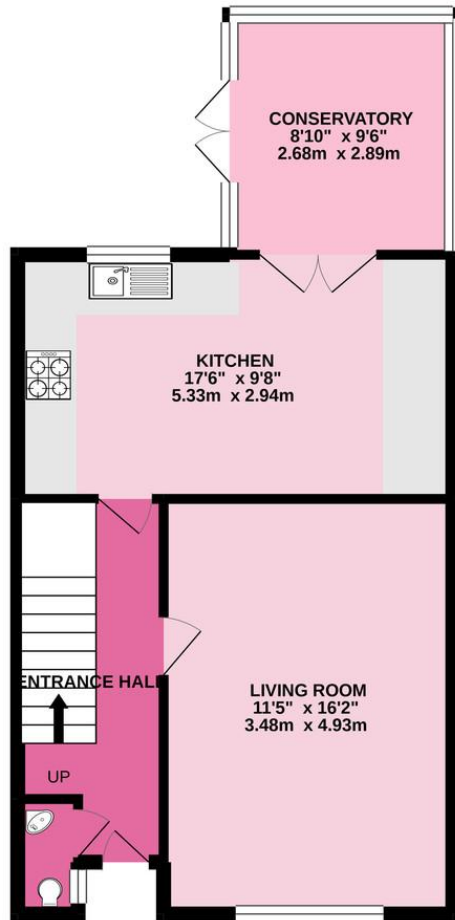
## PROPERTY SUMMARY

harveyrobinson estate agents in Huntingdon are delighted to offer for sale this three bedroom end terrace home located within Godmanchester. Godmanchester has a range of amenities including schools, shops, leisure facilities, restaurants and pubs. It provides great transport links being just a few minute's drive away from the A14 and the mainline Train Station is just 3 miles away. The property benefits from being offered with No Forward Chain and having an off-road parking provision. In brief, the accommodation comprises; Entrance, Cloakroom, Lounge, Kitchen/Diner, Conservatory, Three Bedrooms and Bathroom. Please contact our Huntingdon estate agent office to arrange a viewing.

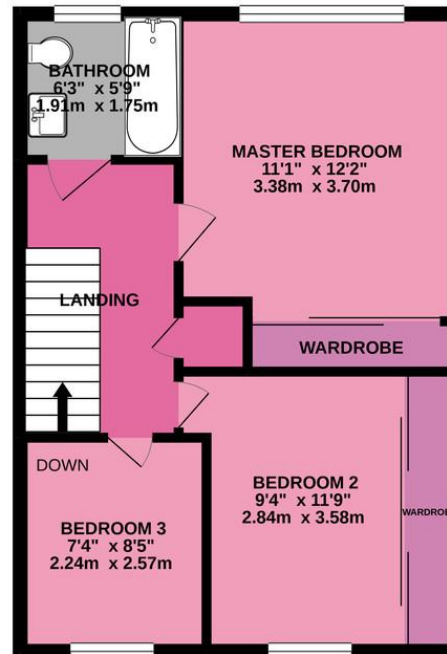




GROUND FLOOR  
524 sq.ft. (48.6 sq.m.) approx.



1ST FLOOR  
432 sq.ft. (40.1 sq.m.) approx.



## FAQs

Council Tax Band: B

%epcGraph\_c\_1\_280%

Agents Note: Whilst every care has been taken to prepare these particulars, they are for guidance purposes only. All measurements are approximate and are for general guidance purposes only and whilst every care has been taken to ensure their accuracy, they should not be relied upon and potential buyers/tenants are advised to recheck the measurements



### OFFICE ADDRESS

91 High Street, Huntingdon,  
Cambridgeshire, PE29 3DP

### CONTACT

01480 454040  
huntingdon@harveyrobinson.co.uk  
www.harveyrobinson.co.uk