



£165,000

81 Christie Drive

Hinchingbrooke, PE29 6JP

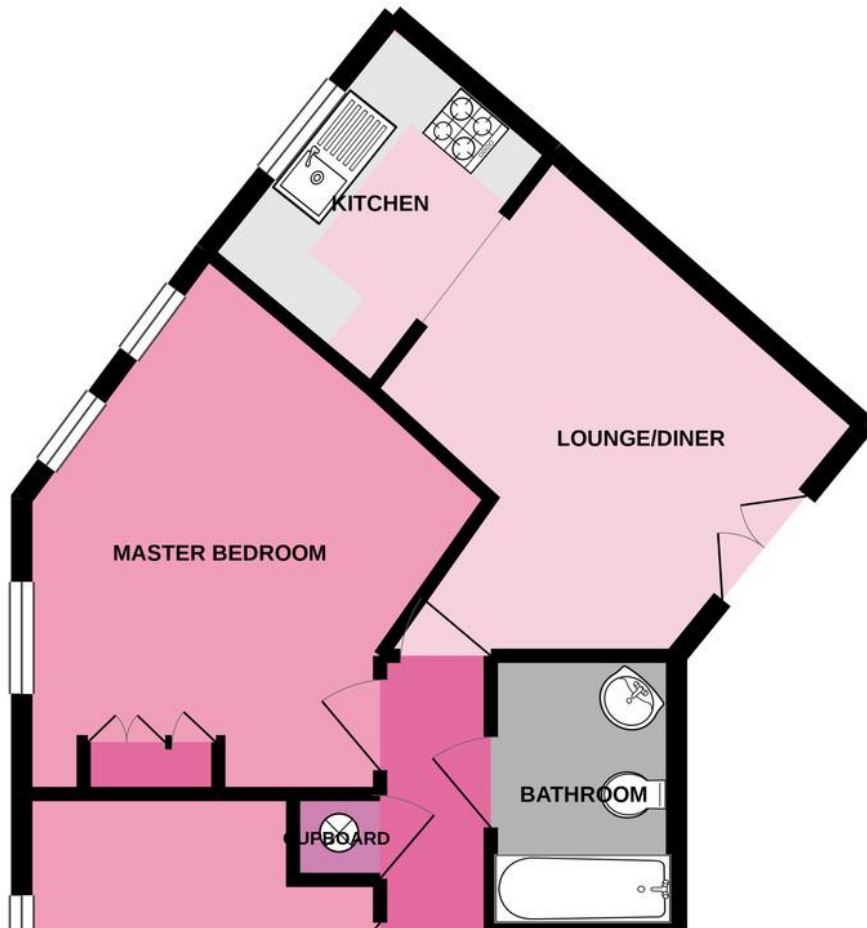
PROPERTY SUMMARY

harveyrobinson estate agents in Huntingdon are pleased to bring to the market this Two Bedroom, Second Floor Apartment situated within the heart of Hinchingsbrooke. The property is within close proximity to Hinchingsbrooke Country Park and Hinchingsbrooke Hospital as well as Huntingdon Town Centre being within walking distance. Huntingdon Train Station offers access to London within the hour. The property benefits from an Open Plan Living Accommodation, Kitchen with Appliances and Allocated Parking as well as Gas Central Heating and Double Glazing throughout. The property will appeal to both Investment Buyers and First Time Buyers alike. Please contact our





GROUND FLOOR
464 sq.ft. (43.1 sq.m.) approx.



FAQs

Type Here

Energy Efficiency Rating		
	Current	Potential
<i>Very energy efficient - lower running costs</i>		
(92-100) A		
(81-91) B		
(69-80) C	78	79
(55-68) D		

Agents Note: Whilst every care has been taken to prepare these particulars, they are for guidance purposes only. All measurements are approximate and are for general guidance purposes only and whilst every care has been taken to ensure their accuracy, they should not be relied upon and potential buyers/tenants are advised to recheck the measurements



OFFICE ADDRESS

91 High Street, Huntingdon,
Cambridgeshire, PE29 3DP

CONTACT

01480 454040
huntingdon@harveyrobinson.co.uk
www.harveyrobinson.co.uk