



HARVEY ROBINSON

Offers In Excess Of
£625,000

Great North Road
Eaton Socon, PE19 8EF

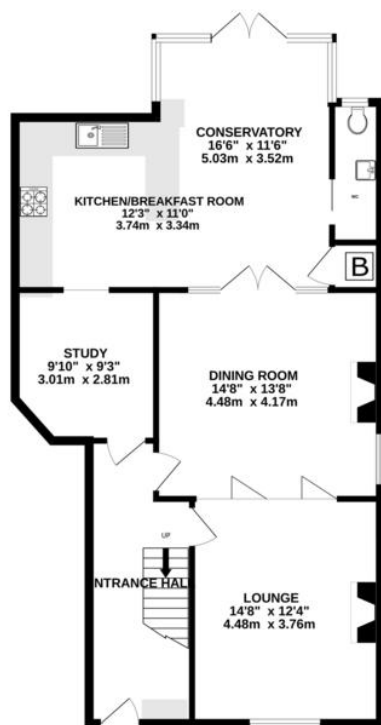
PROPERTY SUMMARY

The Collection by Harvey Robinson proudly present this opportunity to own a substantial five-bedroom Georgian semi-detached family residence steeped in history located in Eaton Socon. Constructed around 1830 and thoughtfully extended with the addition of a stunning open-plan conservatory, whilst retaining the original character and charm, this is an exceptional home offering spacious and adaptable accommodation.





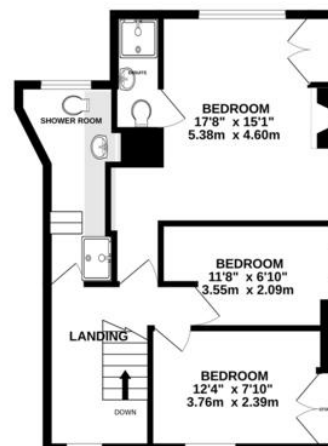
GROUND FLOOR
906 sq.ft. (84.2 sq.m.) approx.



1ST FLOOR
582 sq.ft. (54.1 sq.m.) approx.



2ND FLOOR
511 sq.ft. (47.3 sq.m.) approx.



TOTAL FLOOR AREA: 1999 sq.ft. (185.8 sq.m.) approx.
Made with Metropix ©2025

FAQs

Property Tenure: Freehold

Property Constructed: Circa 1830

Council Tax Band: D

Rear Garden Aspect: East

Primary School: Bushmead/Crosshall Infant School

Secondary School: Ernulf/Longsands Academy

What3Words: ///flesh.riskiest.profiled

EPC Rating: Exempt

Water Meter: Yes

Conservatory Age: 2007

Agents Note: Whilst every care has been taken to prepare these particulars, they are for guidance purposes only. All measurements are approximate and are for general guidance purposes only and whilst every care has been taken to ensure their accuracy, they should not be relied upon and potential buyers/tenants are advised to recheck the measurements

HARVEY ROBINSON

OFFICE ADDRESS

22 Market Square, St Neots,
Cambridgeshire, PE19 2AF

CONTACT

01480 454040

stneots@harveyrobinson.co.uk

www.harveyrobinson.co.uk