



HARVEY ROBINSON

£290,000

6 Ryefield Close

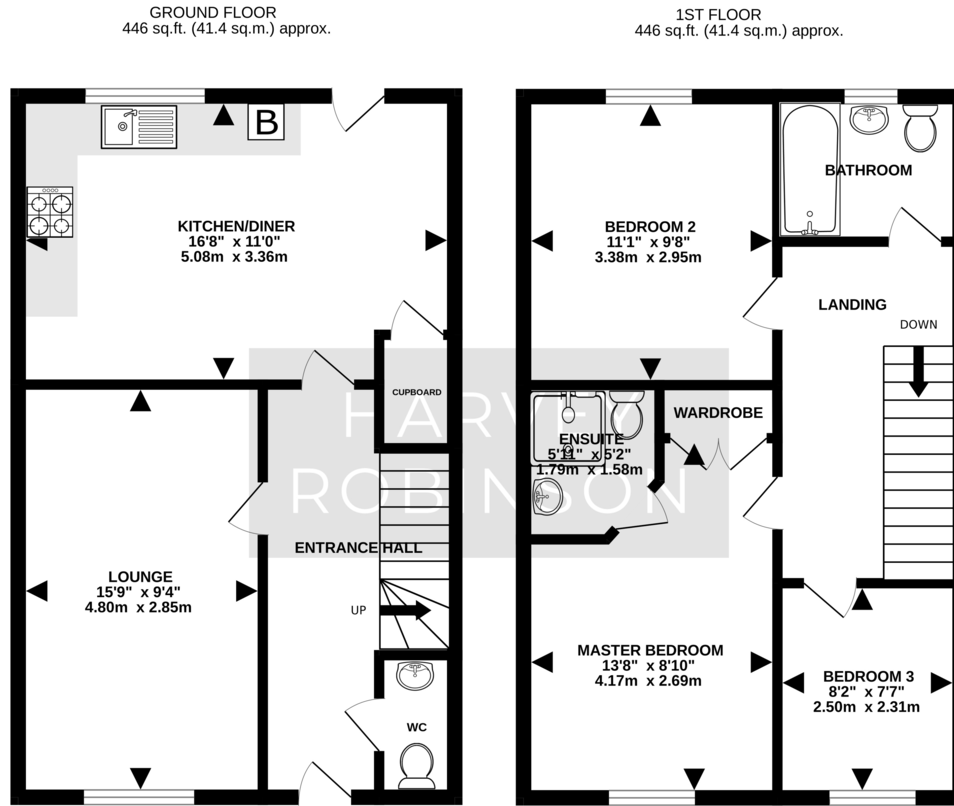
Huntingdon, PE29 1DG

PROPERTY SUMMARY

Harvey Robinson Estate Agents in Huntingdon are proud to bring to market this stunning Three Bedroom Semi Detached Home in Huntingdon. This Linden Homes, built in 2015, offers great space throughout including three bedrooms, two of which are double bedrooms with an ensuite to the master bedroom, separate family bathroom, lounge, open plan kitchen/diner, cloakroom, off road parking to the front & an enclosed garden to the rear. The current owners have really looked after the property and is a must see to truly appreciate the condition and space throughout. For further information, please contact our Huntingdon Offices.







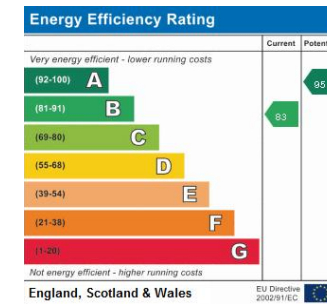
GROUND FLOOR
446 sq.ft. (41.4 sq.m.) approx.

1ST FLOOR
446 sq.ft. (41.4 sq.m.) approx.

TOTAL FLOOR AREA: 892 sq.ft. (82.8 sq.m.) approx.
Made with Metropix ©2024

FAQs

Tenure: Freehold
 Council Tax Band: C
 Vendors Onward Movements: Relocating
 Age of Property: 2015
 Developer: Linden Homes
 Age of Windows: 2015
 Age of Boiler: 2015
 Water Meter: Yes
 Loft: Boarded with light & ladder
 What3Words Location:
 ///incline.skimmers.roofs



Agents Note: Whilst every care has been taken to prepare these particulars, they are for guidance purposes only. All measurements are approximate and are for general guidance purposes only and whilst every care has been taken to ensure their accuracy, they should not be relied upon and potential buyers/tenants are advised to recheck the measurements

HARVEY ROBINSON

OFFICE ADDRESS

91 High Street, Huntingdon,
Cambridgeshire, PE29 3DP

CONTACT

01480 454040
 huntingdon@harveyrobinson.co.uk
 www.harveyrobinson.co.uk