



HARVEY ROBINSON

£350,000

37 Ambury Hill  
Huntingdon, PE29 1JQ

Harvey Robinson Estate Agents are delighted to bring to market this spacious three-bedroom semi-detached family home with a converted loft, situated in the heart of Huntingdon. The property offers generous and versatile living accommodation, ideal for modern family life.

The ground floor features a stunning 18ft walnut wood kitchen/diner, perfect for family meals and entertaining guests. There is also a convenient cloakroom and two utility rooms providing additional practicality.

Upstairs, the property comprises three well-proportioned bedrooms and a family bathroom. The converted loft includes two further rooms, offering flexible space that could be used as additional bedrooms, a home office, or playrooms.

Outside, the home benefits from ample off-road parking and a generous rear garden, ideal for outdoor living and entertaining.

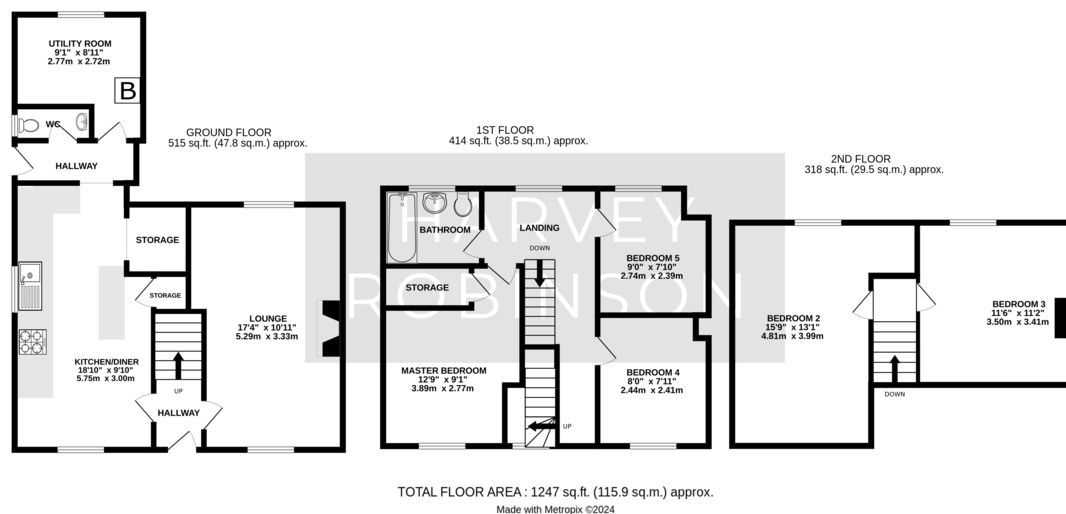
This property is a must-see to truly appreciate everything it has to offer. For further information or to arrange a viewing, please contact our Huntingdon office





## FAQs

Tenure: Freehold  
Council Tax Band: C  
Age of Property: 1940's



Score	Energy rating	Current	Potential
92+	A		
81-91	B		81 B
69-80	C		
55-68	D	60 D	
39-54	E		
21-38	F		

Agents Note: Whilst every care has been taken to prepare these particulars, they are for guidance purposes only. All measurements are approximate and are for general guidance purposes only and whilst every care has been taken to ensure their accuracy, they should not be relied upon and potential buyers/tenants are advised to recheck the measurements

HARVEY ROBINSON

### OFFICE ADDRESS

91 High Street, Huntingdon,  
Cambridgeshire, PE29 3DP

### CONTACT

01480 454040  
huntingdon@harveyrobinson.co.uk  
www.harveyrobinson.co.uk