



HARVEY ROBINSON

£300,000

1 West Close

Alconbury Weston, PE28 4JT

PROPERTY SUMMARY

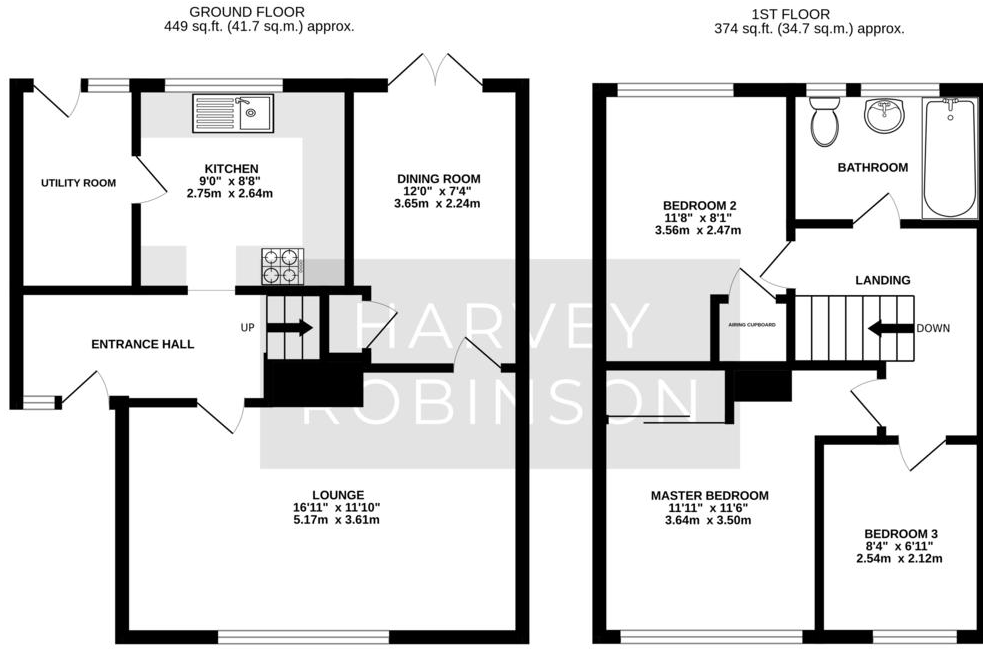
3 

1 

1 







TOTAL FLOOR AREA : 822 sq.ft. (76.4 sq.m.) approx.
Made with Metropix ©2024

FAQs

Type Here

Energy Efficiency Rating		
	Current	Potential
Very energy efficient - lower running costs		
(92-100) A		
(81-91) B		83
(69-80) C		
(55-68) D	63	

Agents Note: Whilst every care has been taken to prepare these particulars, they are for guidance purposes only. All measurements are approximate and are for general guidance purposes only and whilst every care has been taken to ensure their accuracy, they should not be relied upon and potential buyers/tenants are advised to recheck the measurements

HARVEY ROBINSON

OFFICE ADDRESS

91 High Street, Huntingdon,
 Cambridgeshire, PE29 3DP

CONTACT

01480 454040
huntingdon@harveyrobinson.co.uk
www.harveyrobinson.co.uk