



HARVEY ROBINSON

Offers In Excess Of  
**£375,000**  
Waterland  
St Neots, PE19 6GT



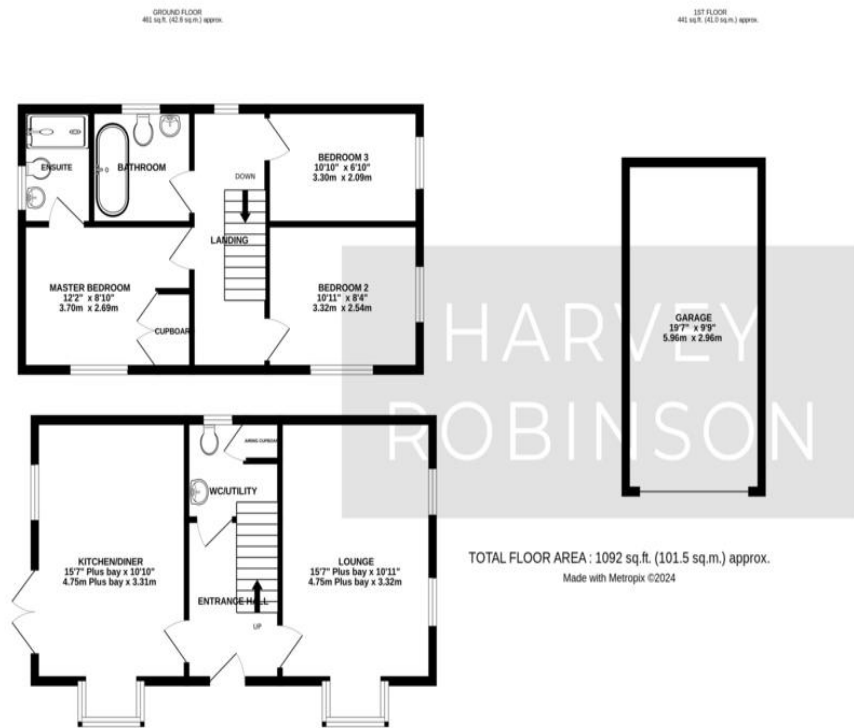
## PROPERTY SUMMARY

Harvey Robinson estate agents are delighted to be marketing this beautifully presented three bedroom detached home located in the popular Loves Farm area of St Neots. The property is well positioned within the development and benefits from easy access to St Neots train station- 5 minutes walking (0.2 miles). On entering the property, you have a central entrance hall with doors leading to the cloakroom/u tility room, the bay fronted lounge, and the bay fronted kitchen/diner, French doors open from the kitchen/diner on to the brick wall enclosed garden. To the first floor there is a spacious landing with a family bathroom, and three bedrooms, the largest of which has an en-suite shower room. in 2021 planning permission was granted for a loft conversion which would create a further bedroom , en-suite and study. To the rear of the property is a single garage and a driveway. Please contact our St Neots branch to arrange a viewing.









## FAQs

Postcode for SatNav: PE19 6GT

What3words location: ///disco.gifted.economics

Planning: Permission was granted in 2021 for the conversion of existing loft space with addition of boxed dormer and installation of 4 rooflights thus creating an extra bedroom, ensuite and study. Planning ref. 20/02251/CLPD  
 Property built: 2014

Council tax: D

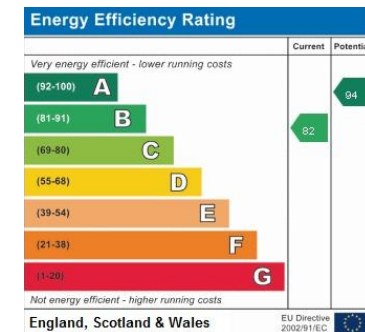
How long have the owners lived here: Since 2021

Reason for move: Job relocation

Garden: South/West

Loft: Part boarded, light and ladder

Management fee: £128 every 6 months



Agents Note: Whilst every care has been taken to prepare these particulars, they are for guidance purposes only. All measurements are approximate and are for general guidance purposes only and whilst every care has been taken to ensure their accuracy, they should not be relied upon and potential buyers/tenants are advised to recheck the measurements

HARVEY ROBINSON

### OFFICE ADDRESS

22 Market Square, St Neots,  
 Cambridgeshire, PE19 2AF

### CONTACT

01480 454040  
 stneots@harveyrobinson.co.uk  
 www.harveyrobinson.co.uk