



HARVEY ROBINSON

Guide Price

£525,000

Ellicott Grove

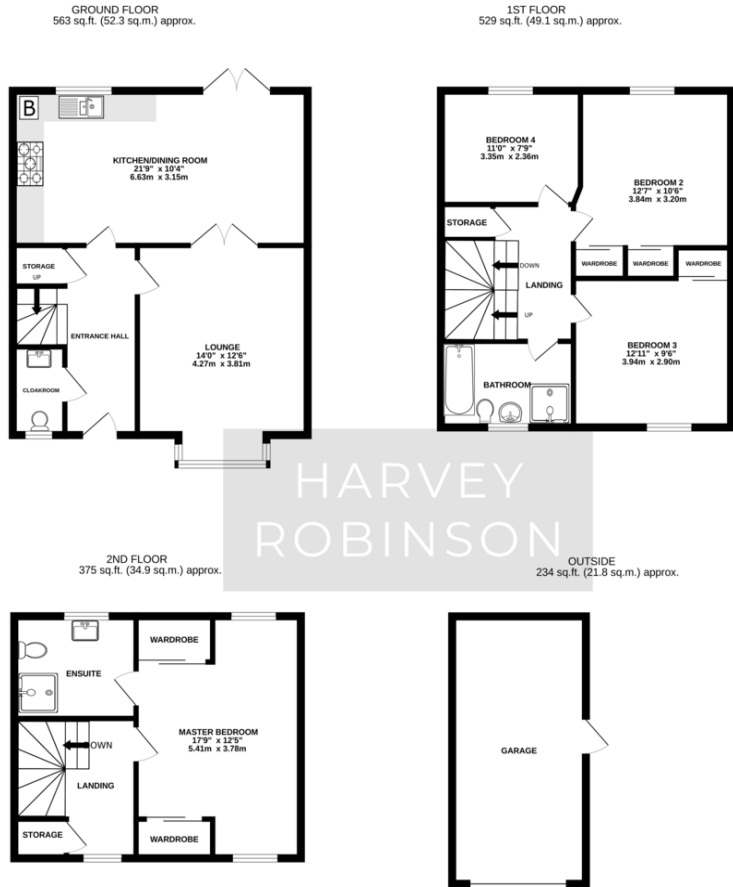
Biggleswade, SG18 8HT

Harvey Robinson estate agents in Biggleswade are delighted to offer for sale this large beautifully presented four double bedroom detached family town house located within the hugely popular and highly sought-after Kings Reach development. Constructed in 2015 by Martin Grant Homes to The Dunton design, the spacious accommodation spread over three floors in brief consists of an entrance hall, a cloakroom, a good size lounge with a bay window and a 21ft kitchen/dining room packed with integrated appliances, and French-style doors opening to the rear garden completing the ground floor living space. Three double bedrooms and a family bathroom can be found occupying the first floor, with the main bedroom, built-in wardrobes and ensuite facilities found on the expansive second floor. Outside, the property has a landscaped garden to the rear primarily laid to lawn with a paved patio area – perfect for outside dining and entertaining. A fully insulated, timber constructed office with power and lighting is also located in the garden providing a valuable working-from-home office/studio space. Ample off-road parking to the side leads to a detached single garage. Located within walking distance to Central Square with amenities to include a local convenience store, a popular café, and newly opened takeaway outlets as well as primary schooling, a community centre and play parks this property would make for an ideal family home. Biggleswade Town is located just over 1 mile away with various shops, bars and restaurants to choose from with further big brand shopping located at the Retail Park on the outskirts of the town. The mainline train station provides access into London Kings Cross and St Pancras within 40 minutes making it ideal for the commuter. Viewings can be arranged by contacting our Biggleswade estate agent offices.

- 4 
- 2 
- 1 

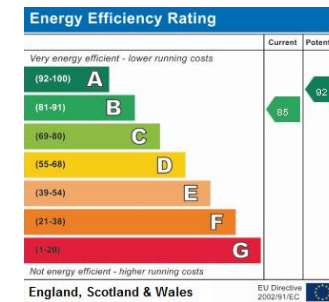






FAQs

Property Tenure: Freehold
 Property Built: 2015
 Rear Garden Aspect: South
 Council Tax Band: E
 Lower School Catchment: St Andrews East
 Middle School Catchment: Edward Peake
 Upper School Catchment: Stratton
 Postcode for SatNav: SG18 8HT
 What3Words Location: ///mixed.hardback.proclaims
 EPC Rating: B



Agents Note: Whilst every care has been taken to prepare these particulars, they are for guidance purposes only. All measurements are approximate and are for general guidance purposes only and whilst every care has been taken to ensure their accuracy, they should not be relied upon and potential buyers/tenants are advised to recheck the measurements

HARVEY ROBINSON

OFFICE ADDRESS

5 Purcell Place, Sullivan Court,
 Biggleswade, Bedfordshire,
 SG18 8SX

CONTACT

01767 660770
 biggleswade@harveyrobinson.co.uk
 www.harveyrobinson.co.uk