



HARVEY ROBINSON

£225,000
8 High Street
Huntingdon, PE29 3TE

PROPERTY SUMMARY

Harvey Robinson Estate Agents are thrilled to present this great two-bedroom cottage, ideally situated in the heart of Huntingdon's historic town centre. Offering in excess of 915 sq. ft. of living space, this home offers great character and charm.

Step inside to discover an entrance lobby leading to a cosy lounge, featuring an inglenook fireplace and a striking spiral staircase. A separate dining room opens into the fitted kitchen. A convenient cloakroom completes the ground floor.

Upstairs, the first floor is home to a generously sized master bedroom and a spacious bathroom with the second double bedroom complementing the whole top floor.

Outside, a south facing courtyard garden offers the perfect spot for some relaxing and fresh air.

For more information or to arrange a viewing, please contact our Huntingdon office today.

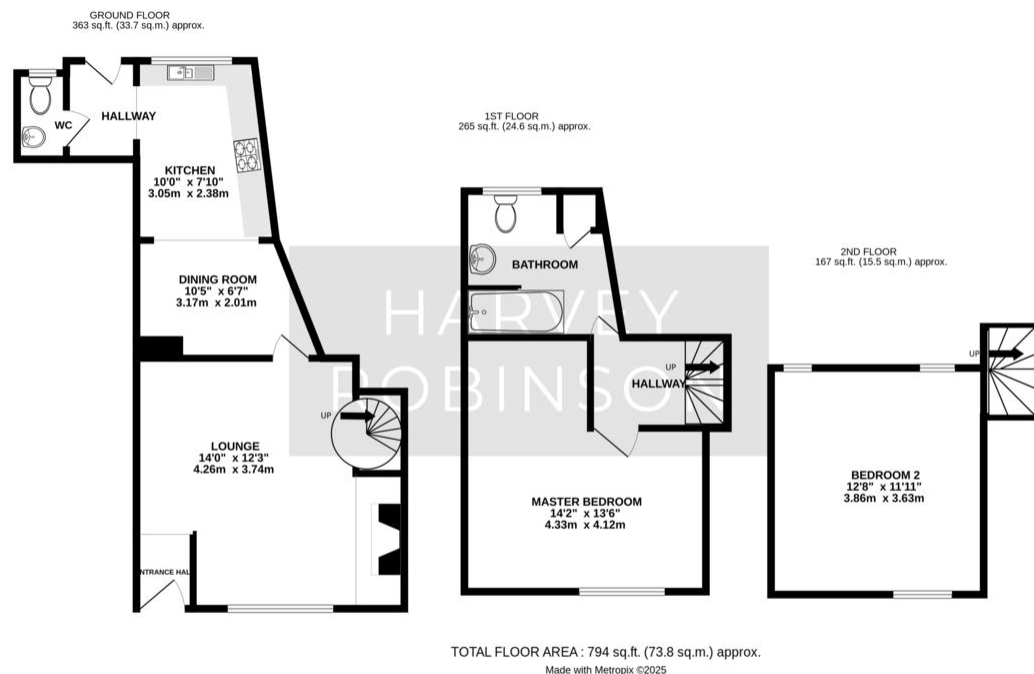
2 

1 

2 







FAQs

Tenure: Freehold

Council Tax Band: B

Vendors Onward Movements: No chain

What3Words

Location:///drumbeat.stirs.inquest

Score	Energy rating	Current	Potential
92+	A		
81-91	B		85 B
69-80	C		
55-68	D	57 D	
39-54	E		
21-38	F		

Agents Note: Whilst every care has been taken to prepare these particulars, they are for guidance purposes only. All measurements are approximate and are for general guidance purposes only and whilst every care has been taken to ensure their accuracy, they should not be relied upon and potential buyers/tenants are advised to recheck the measurements

HARVEY ROBINSON

OFFICE ADDRESS

91 High Street, Huntingdon,
Cambridgeshire, PE29 3DP

CONTACT

01480 454040
huntingdon@harveyrobinson.co.uk
www.harveyrobinson.co.uk