

A photograph of a two-story brick building with a grey door and a blue door, featuring white-framed windows and a satellite dish. The building is made of yellow and red bricks. The sky is blue with some clouds. The text 'HARVEY ROBINSON' is overlaid in a dark grey box in the top right corner.

HARVEY ROBINSON

Offers In Excess Of
£230,000

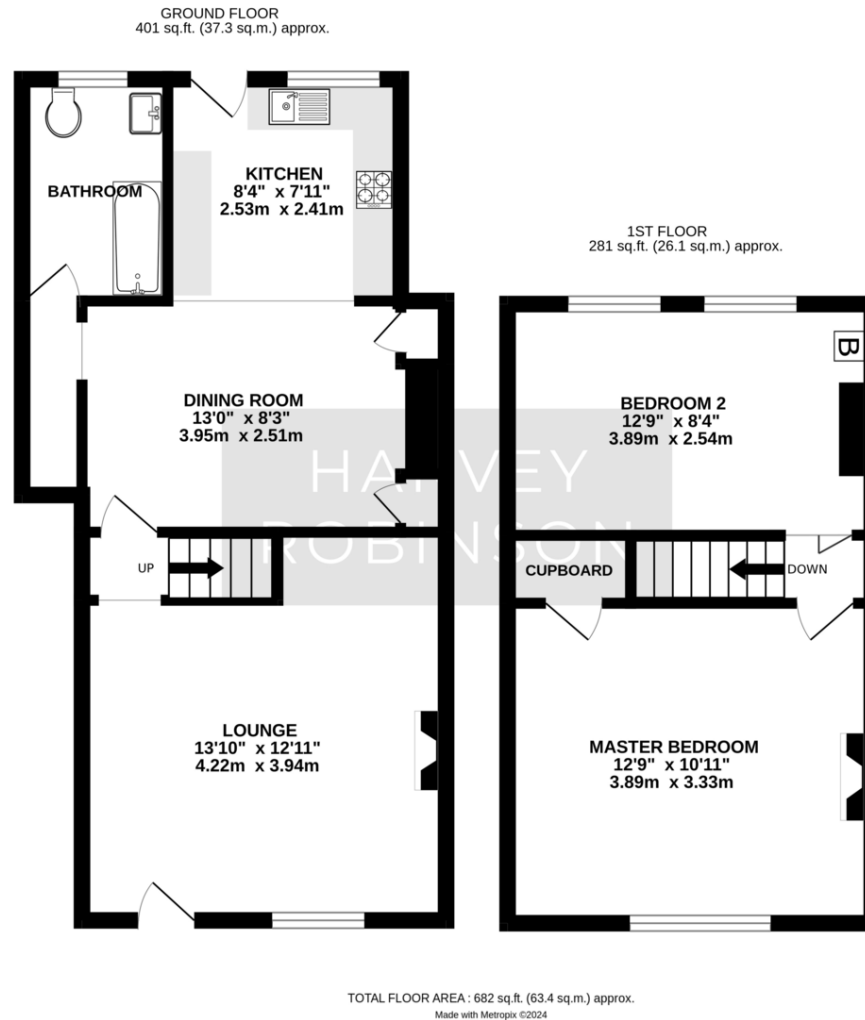
19 Cambridge Street
Godmanchester, PE29 2AT

PROPERTY SUMMARY

Harvey Robinson Estate Agents in Huntingdon are delighted to bring to market this well presented Two Double Bedroom End of Terraced Cottage in the highly sought-after area of Godmanchester. The current owner has undergone extensive modernisation throughout including a refitted stunning 17ft open plan kitchen/diner with integrated appliances, fully refitted bathroom, new front & back external doors, new UPVC double glazing to the front aspect, new fuse board, new central heating system including new radiators, new internal wooden doors, replastered and boarded ceilings, new flooring throughout & re-added all character features to keep in with it's Victorian charm. Other benefits of this beautiful home include an enclosed rear garden with double gated access for potential for off road parking if required and is offered with no onward chain. For further information or to arrange a viewing, please contact our Huntingdon Office.



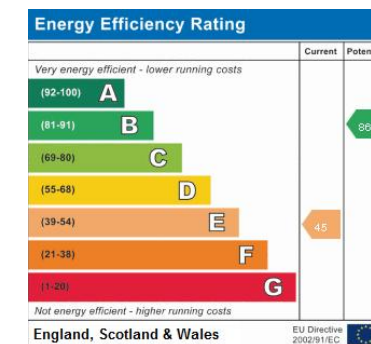




FAQs

Tenure: Freehold
 Council Tax Band: B
 Vendors Onward Movements: No chain
 Age of Propert: Approx. 1900's
 Water Meter: Yes
 Age of Boiler: October 2018, serviced
 Age of Windows: Front windows replaced in March 2021 including front & back door.

Agent Note: Since the EPC was carried out, improvements have been made.



Agents Note: Whilst every care has been taken to prepare these particulars, they are for guidance purposes only. All measurements are approximate and are for general guidance purposes only and whilst every care has been taken to ensure their accuracy, they should not be relied upon and potential buyers/tenants are advised to recheck the measurements

HARVEY ROBINSON

OFFICE ADDRESS

91 High Street, Huntingdon,
Cambridgeshire, PE29 3DP

CONTACT

01480 454040
huntingdon@harveyrobinson.co.uk
www.harveyrobinson.co.uk