



HARVEY ROBINSON

Offers In Excess Of
£395,000
Field Gate Close
St. Neots, PE19 6DG

PROPERTY SUMMARY

Harvey Robinson estate agents in St Neots are delighted to offer for sale this recently refurbished three bedroom detached home in the sought after Loves Farm development, conveniently located within walking distance to St Neots train station and local amenities. Comprising of a bright entrance hall, downstairs cloakroom, a lounge and an 18ft kitchen/ diner to the ground floor, this wonderful home has been thoughtfully refreshed, boasting new flooring and carpet throughout, freshly painted and new showers. On the first floor you will find three fair size bedrooms, two of which are completed with built in wardrobes, and an en-suite to bedroom one and finishing off with the family bathroom. To the rear of the property, a good size enclosed garden with decking and side access and to the front off road parking and a single garage with electric.

3



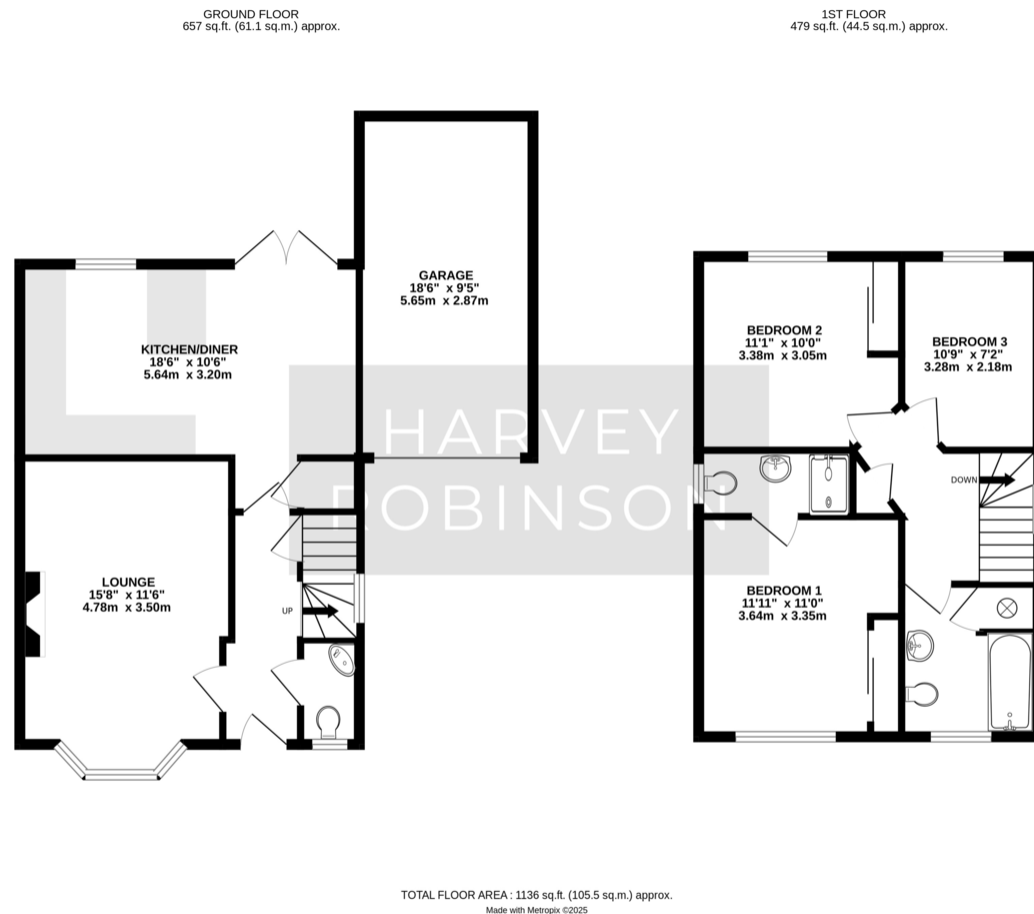
2



1







FAQs

Tenure: Freehold
 EPC: C
 Property Built: Approx 2012
 Onward Movements: No Onward Chain
 Primary School: Roundhouse Primary Lovesfarm
 Secondary School: Longsands Academy
 Council Tax: Band D
 Water Meter: Yes



Agents Note: Whilst every care has been taken to prepare these particulars, they are for guidance purposes only. All measurements are approximate and are for general guidance purposes only and whilst every care has been taken to ensure their accuracy, they should not be relied upon and potential buyers/tenants are advised to recheck the measurements

HARVEY ROBINSON

OFFICE ADDRESS

22 Market Square, St Neots,
Cambridgeshire, PE19 2AF

CONTACT

01480 454040
stneots@harveyrobinson.co.uk
www.harveyrobinson.co.uk