



HARVEY ROBINSON

Offers In Excess Of  
£210,000

Chestnut Grove  
Great Stukeley, PE28 4AD



Harvey Robinson Estate Agents in Huntingdon are delighted to offer for sale this Deceptively spacious Two Bedroom First Floor Apartment. The property is located in this beautifully converted characterful building in Great Stukeley and briefly comprises of Entrance Hall, Lounge, Kitchen, Two Double Bedrooms, Allocated parking, Set in Beautiful grounds with countryside views. For more information and to arrange a viewing please contact Harvey Robinson Estate Agents in Huntingdon.





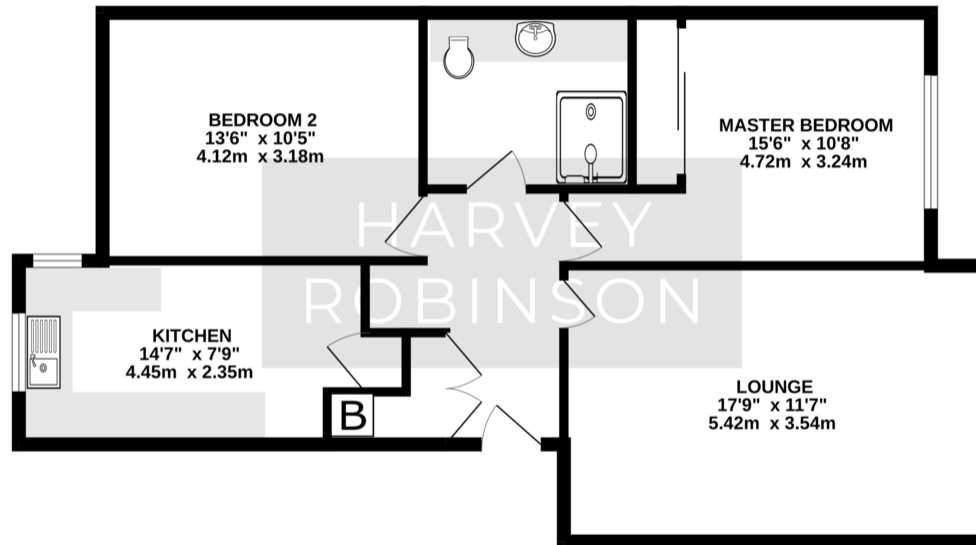
## FAQs

Tenure: Leasehold  
 Floor: First Floor  
 Lease Length: 990 Years  
 Service Charge/Ground Rent: £2800 per year  
 Current Owner: Owned the property for 28 Years  
 Water Meter: Yes, In front car park  
 UPVC Windows: Fitted 8 Years ago  
 Primary School Catchment: Stukeley Meadows  
 Secondary School Catchment: St Peter's  
 Communal Garden: South Facing  
 Chain: No Onward Chain  
 Council Tax Band - B  
 Please note we have not tested any apparatus, fixtures, fittings, or services.  
 Interested parties must undertake their own investigation into the working order of these items. All measurements are approximate, and photographs provided for guidance only.  
 Need to sell your property? Please contact us to arrange your free, no obligation Market Appraisal.

Score	Energy rating	Current	Potential
92+	A		
81-91	B		83 B
69-80	C	75 C	
55-68	D		
39-54	E		
21-38	F		

Agents Note: Whilst every care has been taken to prepare these particulars, they are for guidance purposes only. All measurements are approximate and are for general guidance purposes only and whilst every care has been taken to ensure their accuracy, they should not be relied upon and potential buyers/tenants are advised to recheck the measurements

## GROUND FLOOR 752 sq.ft. (69.8 sq.m.) approx.



TOTAL FLOOR AREA: 752 sq.ft. (69.8 sq.m.) approx.  
 Made with Metropix ©2024

HARVEY ROBINSON

### OFFICE ADDRESS

91 High Street, Huntingdon,  
 Cambridgeshire, PE29 3DP

### CONTACT

01480 454040  
[huntingdon@harveyrobinson.co.uk](mailto:huntingdon@harveyrobinson.co.uk)  
[www.harveyrobinson.co.uk](http://www.harveyrobinson.co.uk)