



HARVEY ROBINSON

Offers In Excess Of  
£260,000  
Westfield Road  
Ramsey, PE26 1JR



PROPERTY SUMMARY

Harvey Robinson Estate Agents in Huntingdon are thrilled to present this three-bedroom semi-detached property in Ramsey, offering over 1,050 sq ft of living space.

The accommodation briefly comprises a welcoming entrance hall with a convenient storage cupboard, a spacious living room with additional storage, a well-equipped kitchen, and a separate dining room. Upstairs, you'll find three generously sized double bedrooms, all featuring UPV C double-glazed windows that flood the rooms with natural light. A family bathroom and an airing cupboard complete the upper floor.

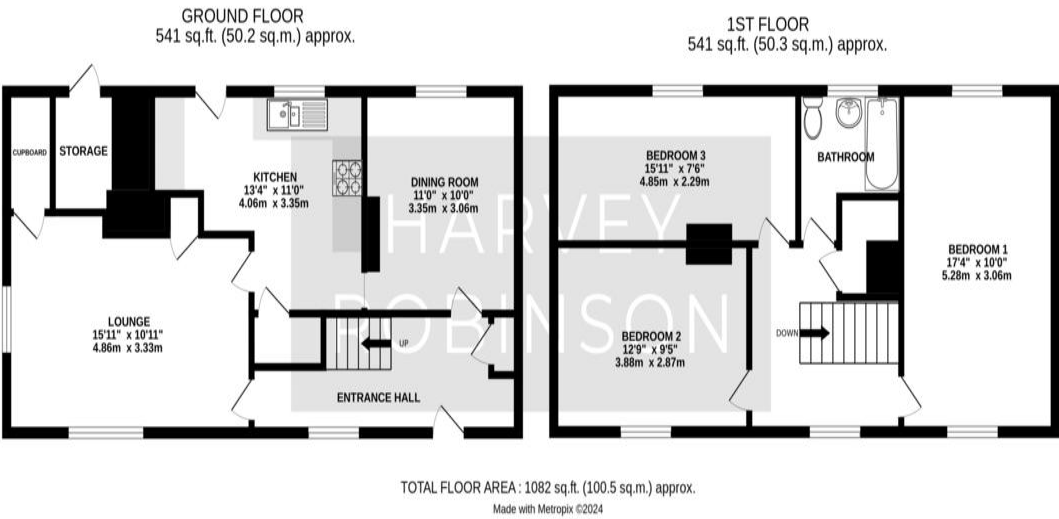
Outside, the property boasts an enclosed front garden and a large rear garden. This home truly needs to be seen to be fully appreciated. For more information or to arrange a viewing, please contact our Huntingdon office.

3

1

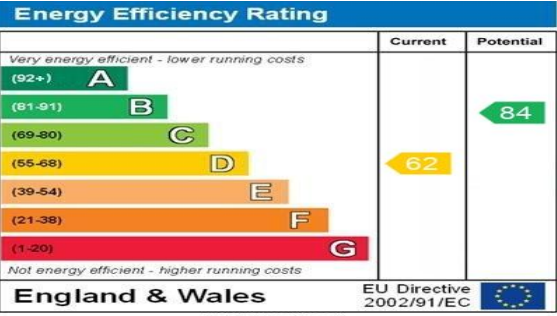
2





FAQs

Tenure: Freehold  
Council Tax Band: B  
Property Built: 1950-1966  
Vendors Owned: 3 Years  
Vendors Onward Movements: Buying on  
Water meter: No  
What3Words: ///sneezed.variety.proclaims



Agents Note: Whilst every care has been taken to prepare these particulars, they are for guidance purposes only. All measurements are approximate and are for general guidance purposes only and whilst every care has been taken to ensure their accuracy, they should not be relied upon and potential buyers/tenants are advised to recheck the measurements

HARVEY ROBINSON

OFFICE ADDRESS  
91 High Street, Huntingdon,  
Cambridgeshire, PE29 3DP

CONTACT  
01480 454040  
huntingdon@harveyrobinson.co.uk  
www.harveyrobinson.co.uk