



HARVEY ROBINSON

Guide Price

£325,000

3 Whitney Close

Hartford, PE29 1AB

PROPERTY SUMMARY

*** GUIDE PRICE £325,000 - £340,000 *** - Harvey Robinson estate agents are thrilled to present this lovely three double bedroom semi-detached townhouse offered with NO ONWARD CHAIN, located in the highly sought-after area of Hartford, Huntingdon. Situated within an exclusive development of just 14 homes, this property, built in 2009, offers over 1100 sq. ft. of well-designed living space.

The ground floor features an entrance hall, cloakroom, and a bright, open-plan lounge/dining area, leading to a convenient conservatory with underfloor heating, perfect for year-round enjoyment. On the first floor, you'll find two generously sized double bedrooms and a modern family bathroom. The top floor offers a private master bedroom with its own en-suite shower room.

Externally, the property benefits from a low-maintenance, enclosed rear garden, a front garden, and a carport providing off-road parking for two vehicles.

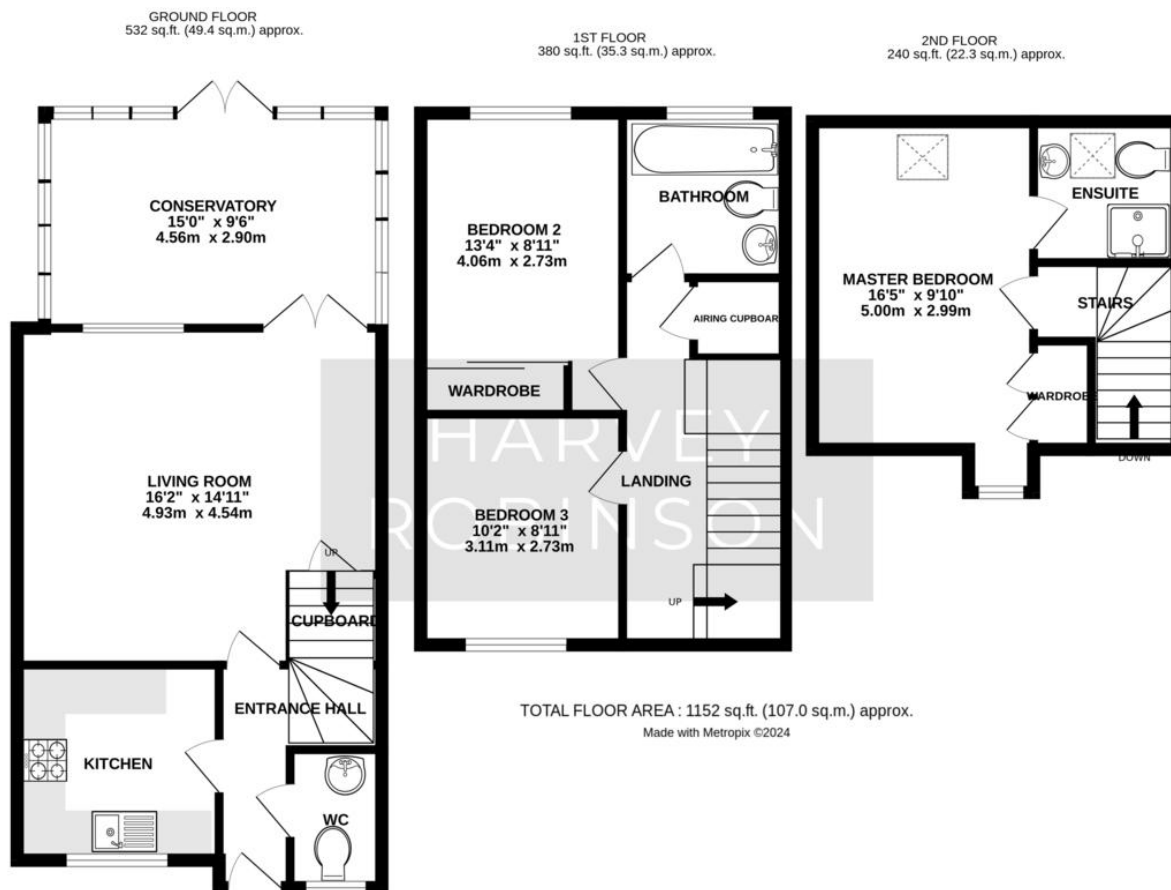
3 

3 

2 







FAQs

Tenure: Freehold
Council Tax Band: C
Age of Property: 2009
Vendors Onward Movements: Moving closer to family
Rear Aspect: South facing
Boundary: Left hand side
Water Meter: No
Age of Boiler: 2009
Loft: Boarded

Score	Energy rating	Current	Potential
92+	A		
81-91	B		86 B
69-80	C	75 C	
55-68	D		
39-54	E		
21-38	F		
1-20	G		

Agents Note: Whilst every care has been taken to prepare these particulars, they are for guidance purposes only. All measurements are approximate and are for general guidance purposes only and whilst every care has been taken to ensure their accuracy, they should not be relied upon and potential buyers/tenants are advised to recheck the measurements

HARVEY ROBINSON

OFFICE ADDRESS

91 High Street, Huntingdon,
Cambridgeshire, PE29 3DP

CONTACT

01480 454040
huntingdon@harveyrobinson.co.uk
www.harveyrobinson.co.uk