



HARVEY ROBINSON

Guide Price

£375,000

Tate Drive

Biggleswade, SG18 8UD

PROPERTY SUMMARY

We are delighted to offer for sale with no onward chain this spacious three bedroom end of terrace family townhouse located on the popular and sought-after Kings Reach development in Biggleswade. Built by Taylor Wimpey in 2017, the property in brief consists of a spacious entrance hall, cloakroom, a kitchen/breakfast room and a generous lounge/dining room with UPVC French-style doors opening onto the rear garden. Two good-sized bedrooms and a family bathroom can be found on the first floor along with a lobby leading up to the expansive second floor main bedroom complete with ensuite facilities. Outside, the property has an enclosed landscaped rear garden with rear access leading out to a single garage and two allocated off-road parking spaces.





FAQs

Property Tenure: Freehold

Garage Tenure: Leasehold

Property Built: 2017

Council Tax Band: D

EPC Rating: B

Rear Garden Aspect: South Easterly

Lower School Catchment: St Andrews East

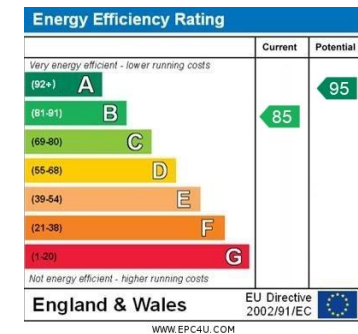
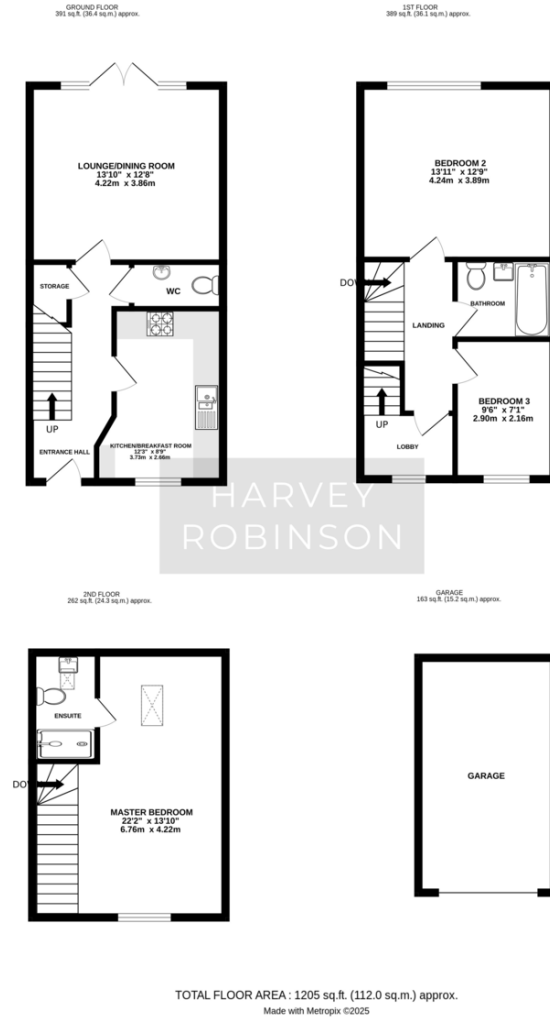
Middle School Catchment: Edward Peake

Upper School Catchment: Stratton

What3Words Location:

///instance.clings.chariots

Estimated Rental Income - Circa £1600pcm



Agents Note: Whilst every care has been taken to prepare these particulars, they are for guidance purposes only. All measurements are approximate and are for general guidance purposes only and whilst every care has been taken to ensure their accuracy, they should not be relied upon and potential buyers/tenants are advised to recheck the measurements

HARVEY ROBINSON

OFFICE ADDRESS

5 Purcell Place, Sullivan Court,
Biggleswade, Bedfordshire,
SG18 8SX

CONTACT

01767 660770
biggleswade@harveyrobinson.co.uk
www.harveyrobinson.co.uk