



HARVEY ROBINSON

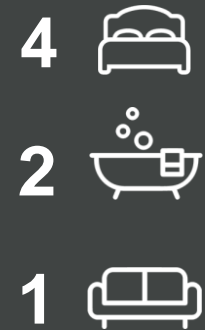
Offers In Excess Of  
£390,000

Bevington Way  
Eynesbury, PE19 2HQ



## PROPERTY SUMMARY

Harvey Robinson Estate Agents in St Neots are delighted to be marketing this spacious three-storey semi-detached property in the popular Eynesbury Manor area. This four-bedroom family home has been well-maintained by its current owners and offers plenty of space for every type of buyer.





## FAQs

Property Built: 2006

Tenure: Freehold

What3Words Location: ///cute.horns.blink

Owners Lived Here: 9 years

Vendor Onward Movements: No Onward-chain

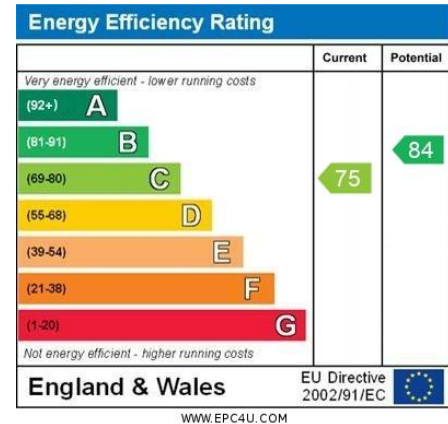
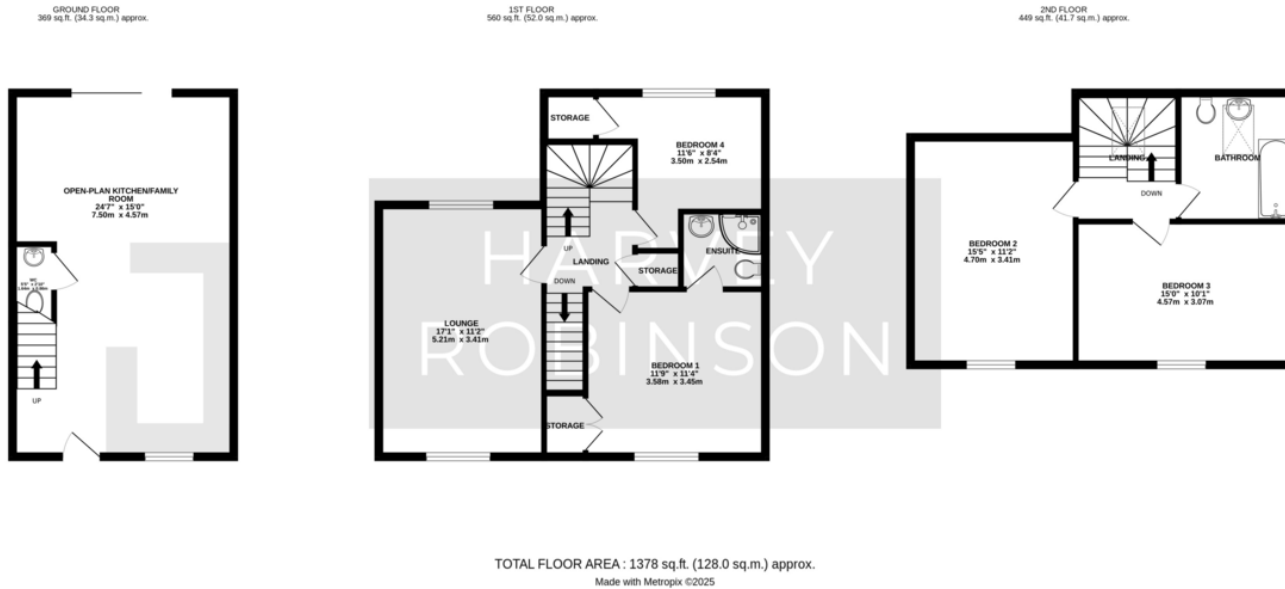
EPC: C

Council Tax Band: D

Garden Aspect: South

Boiler Age: 2006

Loft: Part-boarded



Agents Note: Whilst every care has been taken to prepare these particulars, they are for guidance purposes only. All measurements are approximate and are for general guidance purposes only and whilst every care has been taken to ensure their accuracy, they should not be relied upon and potential buyers/tenants are advised to recheck the measurements

HARVEY ROBINSON

### OFFICE ADDRESS

22 Market Square, St Neots,  
Cambridgeshire, PE19 2AF

### CONTACT

01480 454040  
stneots@harveyrobinson.co.uk  
www.harveyrobinson.co.uk