

A photograph of the rear garden of a two-story brick house. The garden features a gravel path leading from the foreground towards the back. On the left, there is a large green plant in a white pot. In the center, there are several potted plants, including a small tree and some shrubs. To the right, there is a wooden shed with a white-framed glass door. The house has a brick exterior and large windows. The sky is blue with some clouds.

HARVEY ROBINSON

£260,000  
23 Duncan Way  
Hartford, PE29 1SZ



## PROPERTY SUMMARY

Harvey Robinson Estate Agents are thrilled to present this beautifully maintained three-bedroom end-of-terrace home in the sought-after area of Hartford, Huntingdon. Offering 900 sq. ft. of well-appointed living space, this charming property is perfect for families and first-time buyers.

The ground floor welcomes you with a spacious entrance hall, leading to a modern fitted kitchen/breakfast room and a 17ft lounge/dining area—ideal for both relaxing and entertaining. Upstairs, you'll find three well-proportioned bedrooms alongside a modern bathroom.

Externally, the home benefits a landscaped private rear garden complete with a summer house, perfect for outdoor enjoyment. The front garden features a patio area, while additional benefits include a garage, a large lean-to shed, and off-road parking for added convenience.

Don't miss the opportunity to make this stunning home yours—contact us today to arrange a viewing!

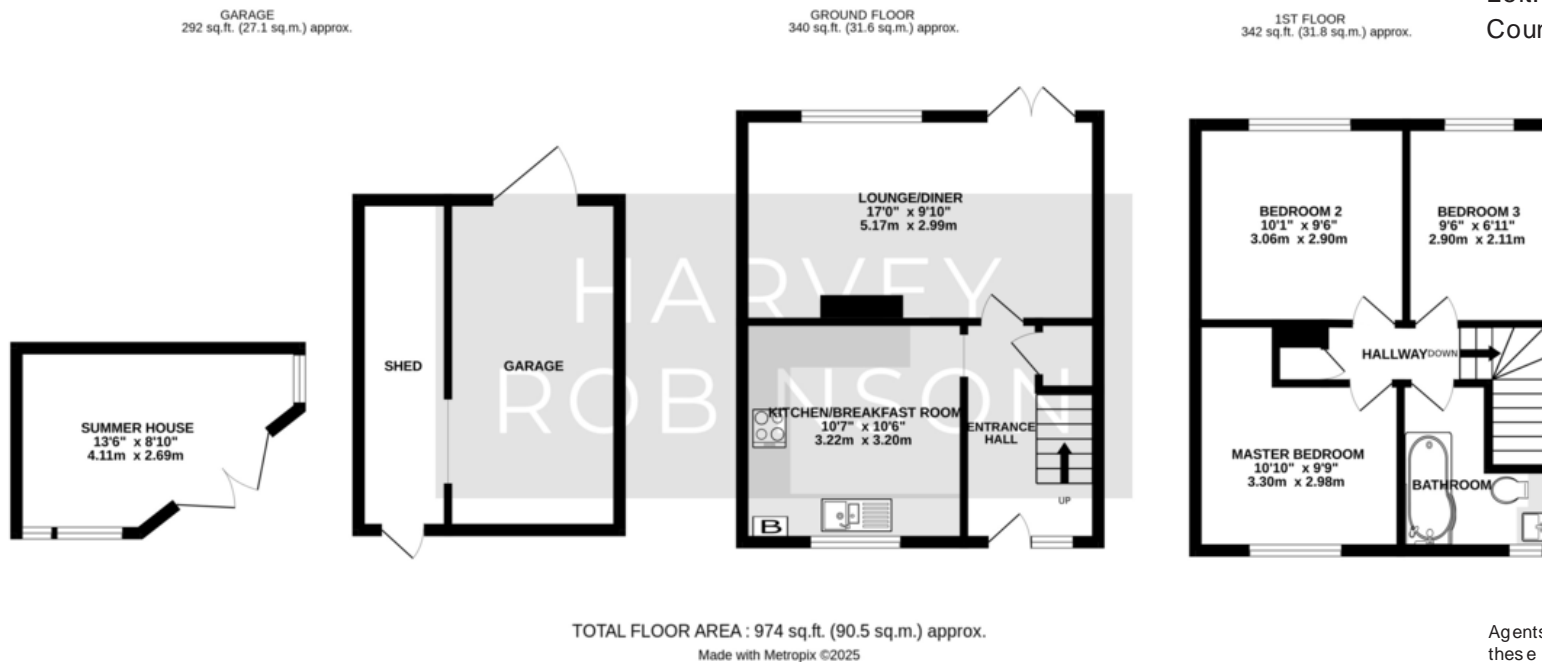






## FAQs

Tenure: Freehold  
 Vendors Onward Movements: Downsizing  
 Boundary: Left, back & right  
 Water Meter: Yes  
 Age of Boiler: Approx. 2017, serviced Dec 2024  
 Loft: Part boarded with light  
 Council Tax Band: B



Agents Note: Whilst every care has been taken to prepare these particulars, they are for guidance purposes only. All measurements are approximate and are for general guidance purposes only and whilst every care has been taken to ensure their accuracy, they should not be relied upon and potential buyers/tenants are advised to recheck the measurements

HARVEY ROBINSON

### OFFICE ADDRESS

91 High Street, Huntingdon,  
Cambridgeshire, PE29 3DP

### CONTACT

01480 454040  
[huntingdon@harveyrobinson.co.uk](mailto:huntingdon@harveyrobinson.co.uk)  
[www.harveyrobinson.co.uk](http://www.harveyrobinson.co.uk)