

A photograph of the rear garden of a two-story brick house. The garden features a large, leafless tree in the center-left, a gravel-covered area, and a wooden fence on the left. The house has a red brick exterior, white-framed windows, and a white front door. A satellite dish is visible on the roof. The sky is blue with some clouds.

HARVEY ROBINSON

£240,000

23 Macbeth Close

Huntingdon, PE29 1PB

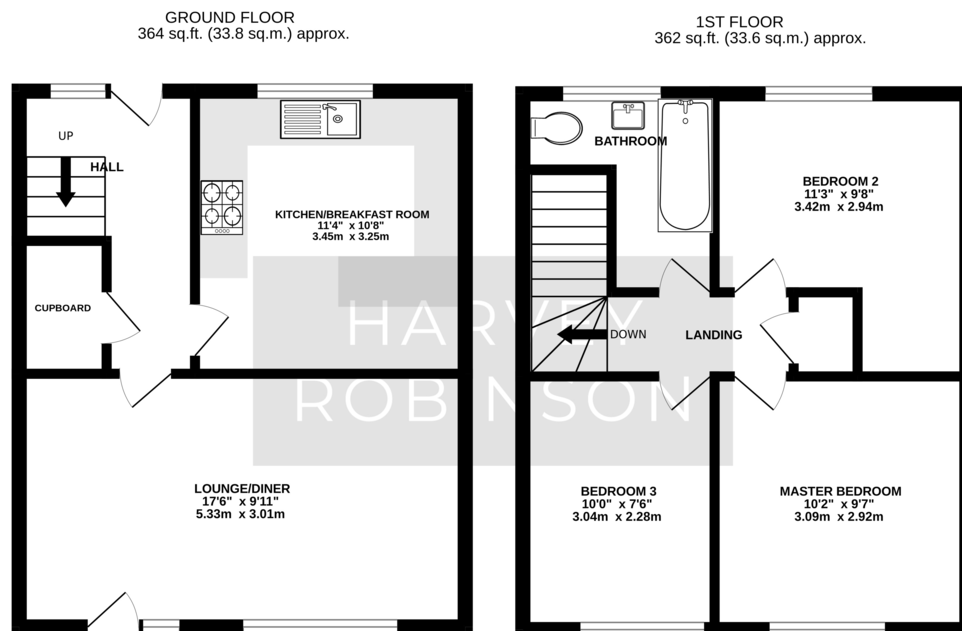
PROPERTY SUMMARY

Harvey Robinson Estate Agents are delighted to present this beautifully presented three-bedroom mid-terrace home, perfectly situated in the sought-after Hartford area of Huntingdon. Originally built in the 1960s, this property has been thoughtfully updated throughout.

The ground floor features a spacious 17ft lounge/diner, a modern fitted kitchen complete with a double oven and breakfast bar, and an inner hallway with stairs leading to the first floor. Upstairs, you'll find three well-proportioned bedrooms, two generous doubles and a large single, along with a modern family bathroom.







TOTAL FLOOR AREA : 726 sq.ft. (67.4 sq.m.) approx.
Made with Metropix ©2025

FAQs

Tenure: Freehold
 EPC: D
 Property Built: 1960
 Onward Movements: No Onward Chain
 Rear Garden: Facing SW
 Primary School: Thongsley
 Secondary School: St Peters
 Council Tax: Band B
 Loft: light only
 Water Meter: Yes
 Estimated Rental Income: £850 pcm current tenants are paying but would be 975pcm in current market (maybe higher)
 Standard Brick and Tile
 Left and Back Fence is boundary
 No age of boiler, last service Feb 25
 W3W: ///protected.energy.sleep

Score	Energy rating	Current	Potential
92+	A		
81-91	B		83 B
69-80	C		
55-68	D	66 D	
39-54	E		
21-38	F		
1-20	G		

Agents Note: Whilst every care has been taken to prepare these particulars, they are for guidance purposes only. All measurements are approximate and are for general guidance purposes only and whilst every care has been taken to ensure their accuracy, they should not be relied upon and potential buyers/tenants are advised to recheck the measurements

HARVEY ROBINSON

OFFICE ADDRESS

91 High Street, Huntingdon,
Cambridgeshire, PE29 3DP

CONTACT

01480 454040
huntingdon@harveyrobinson.co.uk
www.harveyrobinson.co.uk