



HARVEY ROBINSON

£275,000  
Potton Road  
St. Neots, PE19 2NN



## PROPERTY SUMMARY

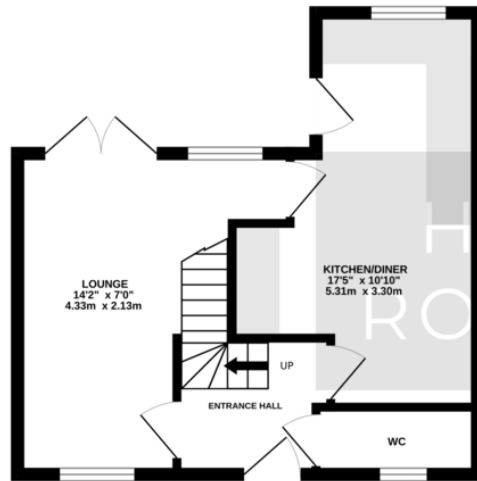
Harvey Robinson Estate Agents are delighted to offer for sale this Two Double Bedroom Semi-Detached Home which is situated in a Cul-de-sac off Potton Road, close to local amenities including a Sports/Leisure Centre, Supermarket, Primary and Secondary Schools. Downstairs the property comprises of an entrance Hall, lounge, kitchen/diner and cloakroom. Upstairs there are two double bedrooms and a spacious bathroom featuring a four-piece suite. Outside there is a driveway providing off-road parking and an enclosed rear garden.

For more information and to arrange a viewing, please contact Harvey Robinson in St Neots.

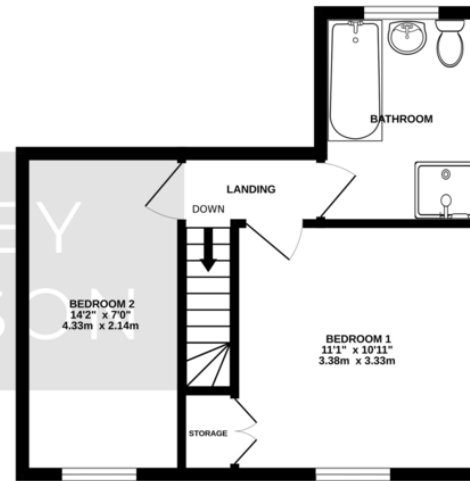




GROUND FLOOR  
333 sq.ft. (30.9 sq.m.) approx.



1ST FLOOR  
333 sq.ft. (30.9 sq.m.) approx.



TOTAL FLOOR AREA : 665 sq.ft. (61.8 sq.m.) approx.  
Made with Metropix ©2025

## FAQs

Tenure: Freehold

EPC: TBC

Property Built: 2015

Onward Movements: No Chain

Rear Garden: South/ South East Facing

Primary School: Winhills Primary Academy

Secondary School: Ernulf Academy

Council Tax: Band B

What3words:

///occupiers.wishes.headrest

Please note we have not tested any apparatus, fixtures, fittings, or services. Interested parties must undertake their own investigation into the working order of these items. All measurements are approximate, and photographs provided for guidance only.

Need to sell your property? Please contact us to arrange your free, no obligation Market Appraisal.

For independent whole of market mortgage advice please call the team to book your appointment.

View all our properties at [harveyrobinson.co.uk](http://harveyrobinson.co.uk)

TBC

Agents Note: Whilst every care has been taken to prepare these particulars, they are for guidance purposes only. All measurements are approximate and are for general guidance purposes only and whilst every care has been taken to ensure their accuracy, they should not be relied upon and potential buyers/tenants are advised to recheck the measurements

HARVEY ROBINSON

### OFFICE ADDRESS

22 Market Square, St Neots,  
Cambridgeshire, PE19 2AF

### CONTACT

01480 454040  
[stneots@harveyrobinson.co.uk](mailto:stneots@harveyrobinson.co.uk)  
[www.harveyrobinson.co.uk](http://www.harveyrobinson.co.uk)