



HARVEY ROBINSON

Guide Price

£300,000

17 Robertson Way

Sapley, PE28 2GG

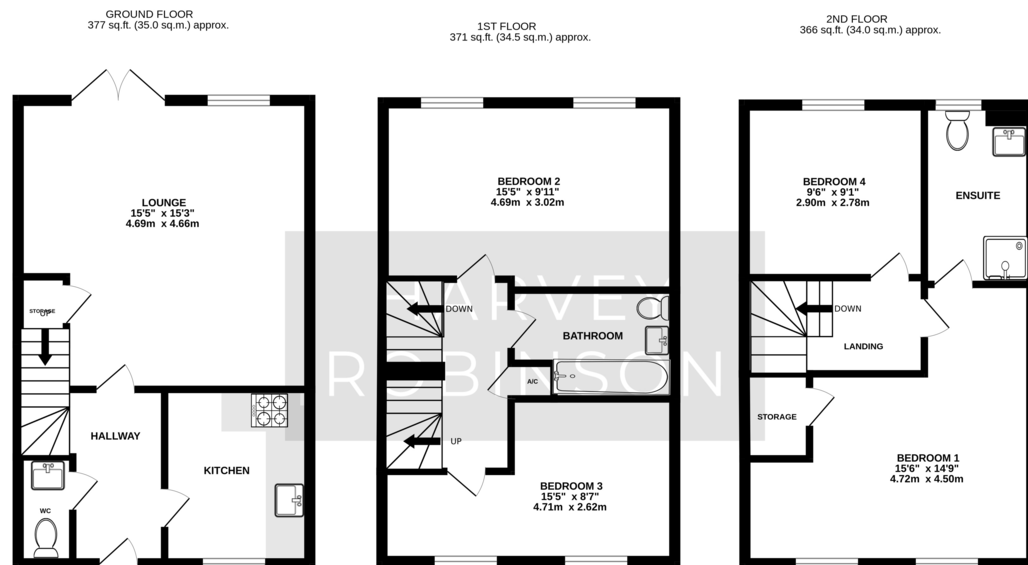
Harvey Robinson Estate Agents are delighted to offer this spacious four-bedroom mid-terrace townhouse, located on Robertson Way in the popular Sapley area of Huntingdon. Built in 2005, this generously proportioned home is arranged over three floors and offers flexible living space ideal for growing families or those in need of a home office or guest accommodation.

The ground floor comprises a welcoming entrance hall, a downstairs WC, a modern kitchen to the front, and a large rear-facing lounge /diner with access to the garden. The first floor offers two well-sized double bedrooms and a family bathroom. The top floor is home to the impressive master bedroom with ensuite shower room, as well as a fourth bedroom, which could also function as a study, nursery or dressing room.

Externally, the property benefits from an enclosed rear garden and off-road parking situated in front of a garage located beneath a nearby coach house.







TOTAL FLOOR AREA : 1114 sq.ft. (103.5 sq.m.) approx.
Made with Metropix ©2025

FAQs

Tenure: Freehold
Council Tax Band: D
Vendors Onward Movements: No chain
Rear Aspect: West facing
Water Meter: Yes
Primary School Catchment: St John's CofE Primary School
Secondary School Catchment: St Peters W3W - [///technical.newlywed.bronzes](http://technical.newlywed.bronzes)

Score	Energy rating	Current	Potential
92+	A		
81-91	B		87 B
69-80	C	74 C	
55-68	D		
39-54	E		
21-38	F		
1-10	G		

Agents Note: Whilst every care has been taken to prepare these particulars, they are for guidance purposes only. All measurements are approximate and are for general guidance purposes only and whilst every care has been taken to ensure their accuracy, they should not be relied upon and potential buyers/tenants are advised to recheck the measurements

HARVEY ROBINSON

OFFICE ADDRESS

91 High Street, Huntingdon,
Cambridgeshire, PE29 3DP

CONTACT

01480 454040
huntingdon@harveyrobinson.co.uk
www.harveyrobinson.co.uk