



HARVEY ROBINSON

Guide Price

£535,000

Gemini Lane

Biggleswade, SG18 8DN

PROPERTY summary

We are delighted to offer for sale this stunning and immaculately presented four double bedroom detached family home, located within the popular Kings Reach development. Constructed by Martin Grant Homes to the sought-after Langford design, the spacious and well-laid-out accommodation in brief comprises an entrance hall, cloakroom, a 20ft dual-aspect lounge with a bay window to the front and French doors opening to the rear garden, a separate study/family room with another bay window to the front aspect, and a family/dining room leading off the spacious fitted kitchen, also with French doors opening to the garden. Upstairs, a galleried landing leads to four double bedrooms, with bedrooms one and two benefitting from built-in wardrobes. Bedroom one also features ensuite facilities, while a family bathroom completes the first-floor accommodation. Outside, the property enjoys a brick-wall enclosed, south-facing garden laid mainly to lawn, with a patio seating area and well-stocked flower beds to the borders. A personnel door provides access to a detached single garage with parking in front.





FAQs

Property Tenure: Freehold

Property Built: 2012

Council Tax Band: E

EPC Rating: C

Rear Garden Aspect: South

Water Meter: Yes

Boiler Installed: 2012

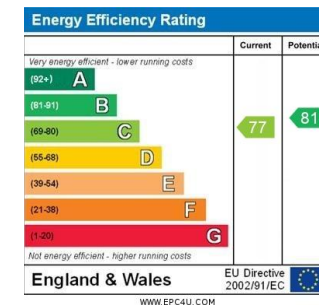
Boiler Last Service: 2025

Primary School Catchment: St Andrews East

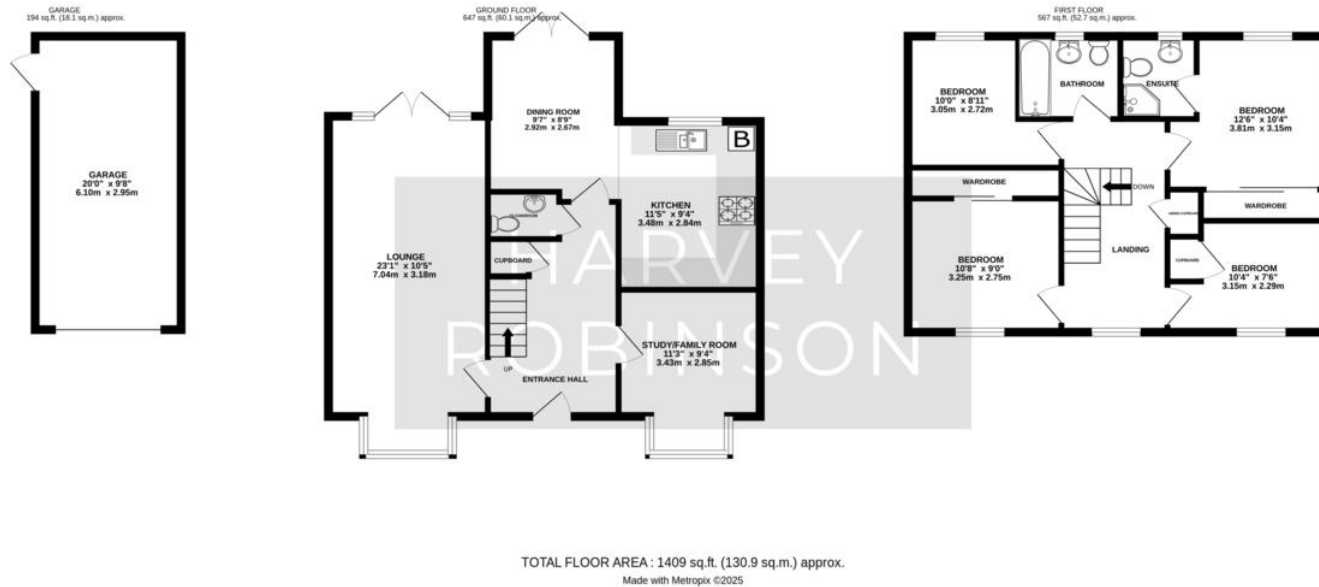
Secondary School Catchment: Edward Peake / Stratton

What3Words Location:

///stone.redeeming.moved



Agents Note: Whilst every care has been taken to prepare these particulars, they are for guidance purposes only. All measurements are approximate and are for general guidance purposes only and whilst every care has been taken to ensure their accuracy, they should not be relied upon and potential buyers/tenants are advised to recheck the measurements



HARVEY ROBINSON

OFFICE ADDRESS

5 Purcell Place, Sullivan Court,
Biggleswade, Bedfordshire,
SG18 8SX

CONTACT

01767 660770
biggleswade@harveyrobinson.co.uk
www.harveyrobinson.co.uk