

A photograph of a two-story brick house with a paved courtyard and a wooden fence. The house is made of light-colored bricks and has white-framed windows and a white door. A large tree is on the left, and a wooden fence is on the right. The courtyard is paved with bricks. A dark grey banner with white text is in the top right corner, and another dark grey banner with white text is in the bottom left corner.

HARVEY ROBINSON

£325,000
6 Bedford Street
St. Neots, PE19 1AX

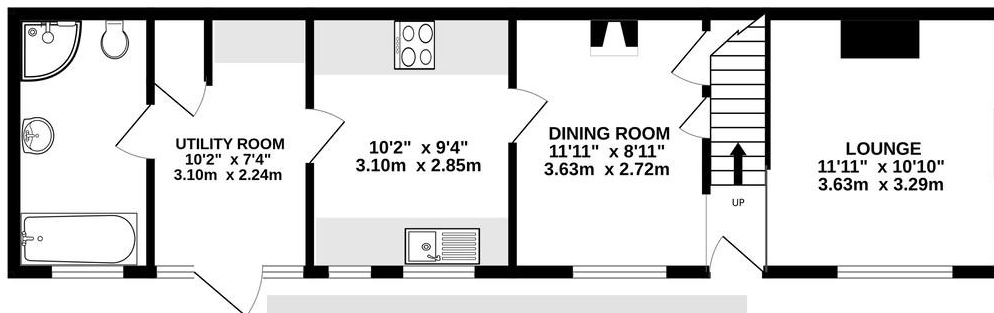
PROPERTY SUMMARY

Harvey Robinson estate agents are delighted to be marketing this charming Victorian semi-detached cottage, situated close to St Neots town centre, offering a delightful blend of period character and modern updates. The spacious ground floor features a cosy lounge, a separate dining room with a log burner perfect for winter evenings, a re-fitted kitchen, utility/breakfast room, and a family bathroom. Upstairs, there are two comfortable bedrooms, ideal for restful retreats or home offices. Outside, the property boasts secure gated off-road parking and a private garden space, providing a perfect setting for outdoor entertaining and relaxation in a sought-after location.



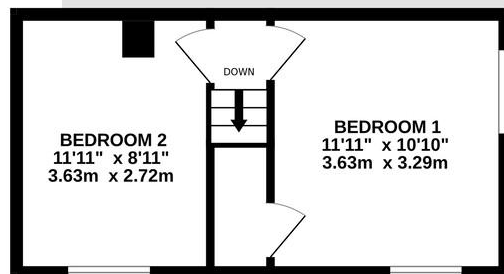


GROUND FLOOR
531 sq.ft. (49.3 sq.m.) approx.



HARVEY
ROBINSON

1ST FLOOR
265 sq.ft. (24.6 sq.m.) approx.



TOTAL FLOOR AREA : 796 sq.ft. (74.0 sq.m.) approx.

Made with Metropix ©2025

FAQs

Postcode for SatNav: PE19 1AX

What3Words location: ///having.acclaimed.law.s

Council tax: A

Property built: 1876

Conservation area: Yes

How long has the owner lived here: Since 2021

Reason for moving: Upsizing

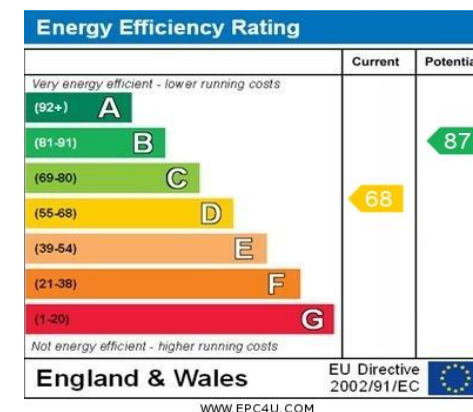
Boundary fence responsibility: Left & rear

Garden aspect: South

Water meter: Yes

Loft boarded: Partially

Fixtures and fittings included: White goods, log burner, carpets & flooring



Agents Note: Whilst every care has been taken to prepare these particulars, they are for guidance purposes only. All measurements are approximate and are for general guidance purposes only and whilst every care has been taken to ensure their accuracy, they should not be relied upon and potential buyers/tenants are advised to recheck the measurements

HARVEY ROBINSON

OFFICE ADDRESS

22 Market Square, St Neots,
Cambridgeshire, PE19 2AF

CONTACT

01480 454040
stneots@harveyrobinson.co.uk
www.harveyrobinson.co.uk