



HARVEY ROBINSON

Guide Price

£360,000

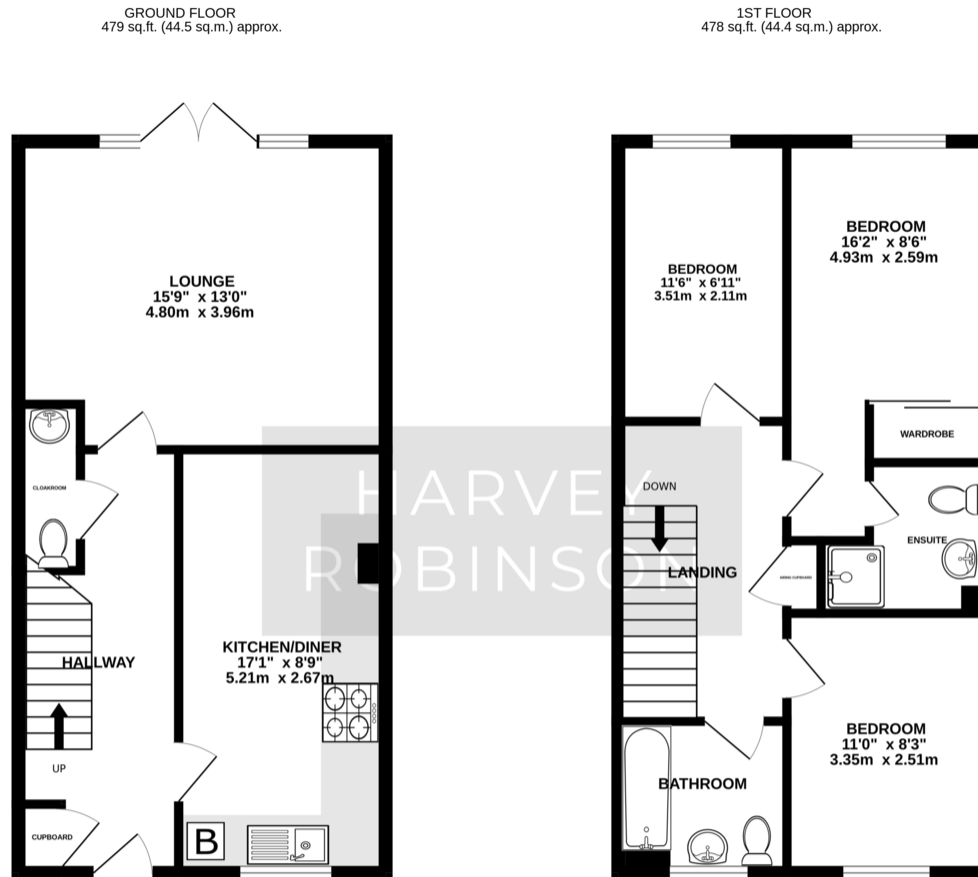
Saturn Way

Biggleswade, SG18 8FF

Located within the highly sought-after Kings Reach development in Biggleswade, this well-maintained three-bedroom end-of-terrace home, built by Martin Grant Homes in 2011, offers generous and versatile living space throughout. The ground floor comprises a welcoming entrance hall, a convenient cloakroom, a modern fitted kitchen/dining room, and a spacious lounge with French-style doors opening onto the landscaped rear garden - perfect for indoor-outdoor living. Upstairs, the property boasts three well-proportioned bedrooms, including a master with ensuite, and a stylish family bathroom. Externally, there is an enclosed rear garden ideal for relaxing or entertaining, as well as off-road parking to the front. With local schools, parks, and amenities all nearby, and excellent access to the A1 and Biggleswade mainline train station (offering services into London in around 40 minutes), this property is perfectly suited to families, first-time buyers, or those seeking a well-connected location.



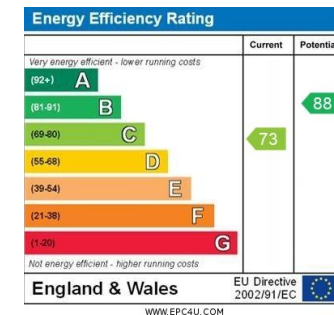




TOTAL FLOOR AREA: 957 sq.ft. (88.9 sq.m.) approx.
Made with Metropix ©2025

FAQs

Tenure: Freehold
Property Built: 2011
Council Tax Band: D
EPC Rating: C
Rear Garden Aspect: North
Boiler Installed: 2011
Boiler Last Serviced: 2025
Primary School Catchment: St Andrews East
Secondary School Catchment: Edward Peake / Stratton
What3Words: ///afford.wins.sourcing



Agents Note: Whilst every care has been taken to prepare these particulars, they are for guidance purposes only. All measurements are approximate and are for general guidance purposes only and whilst every care has been taken to ensure their accuracy, they should not be relied upon and potential buyers/tenants are advised to recheck the measurements

HARVEY ROBINSON

OFFICE ADDRESS

5 Purcell Place, Sullivan Court,
Biggleswade, Bedfordshire,
SG18 8SX

CONTACT

01767 660770
biggleswade@harveyrobinson.co.uk
www.harveyrobinson.co.uk