



HARVEY ROBINSON

Offers In Excess Of
£280,000

Holmehill

Godmanchester, PE29 2EX

Harvey Robinson Estate Agents in Huntingdon are delighted to present this beautifully presented three-bedroom terraced home, located in the highly sought-after area of Holme Hill, Godmanchester. Offering over 880 sq ft of well-appointed living space, this property is ideal for first-time buyers eager to step onto the property ladder.

On the ground floor, you're welcomed by a bright entrance hall that opens into a spacious open-plan living and dining area, bathed in natural light. This flows seamlessly into a stylish, well-maintained kitchen, perfect for modern living and entertaining.

Upstairs, the accommodation begins with bedroom three, currently used as a dressing room, followed by a generous master bedroom. Across the landing, you'll find a useful study area and a second bedroom, which has been extended by the removal of a partition wall to create a larger, more versatile space. The upstairs is completed by a contemporary family bathroom and a practical airing cupboard.

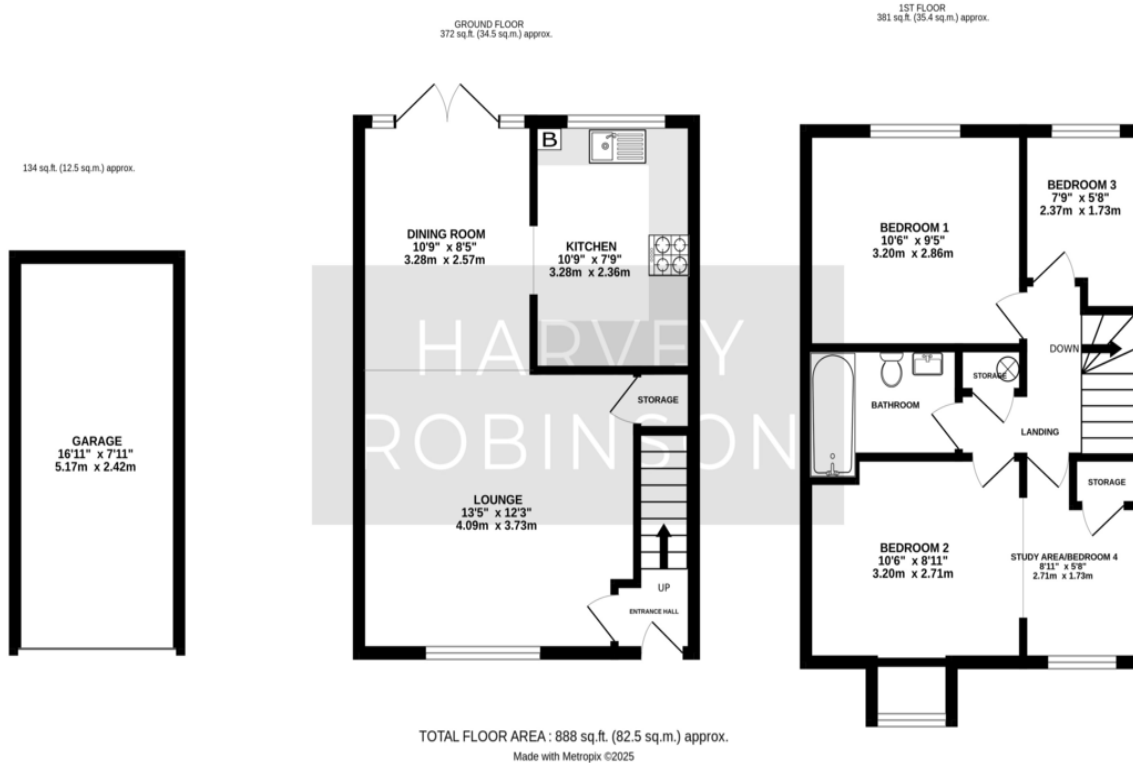
Externally, the property boasts a neat front garden, a rear garden laid to lawn with a decked seating area, ideal for outdoor dining and relaxation. Additionally, there is a garage and off-road parking, providing convenient storage and vehicle access.





FAQs

Tenure: Freehold
 Council Tax: Band C
 Current Owners Onward Movements:
 Owned for 7+ Years and relocating
 Garden: South Facing
 Boiler Installed: 2010
 Primary School Catchment: St Annes
 primary school
 Secondary School Catchment:
 Hinchingsbrooke secondary school
 What3Words Locationnn:
 ///indicates.puppy.etchings
 Garage Location:
 ///hairspray.pianists.energetic



Agents Note: Whilst every care has been taken to prepare these particulars, they are for guidance purposes only. All measurements are approximate and are for general guidance purposes only and whilst every care has been taken to ensure their accuracy, they should not be relied upon and potential buyers/tenants are advised to recheck the measurements

HARVEY ROBINSON

OFFICE ADDRESS

91 High Street, Huntingdon,
 Cambridgeshire, PE29 3DP

CONTACT

01480 454040
 huntingdon@harveyrobinson.co.uk
 www.harveyrobinson.co.uk