



HARVEY ROBINSON

£350,000

Holly Blue Close

Little Paxton, PE19 6TD

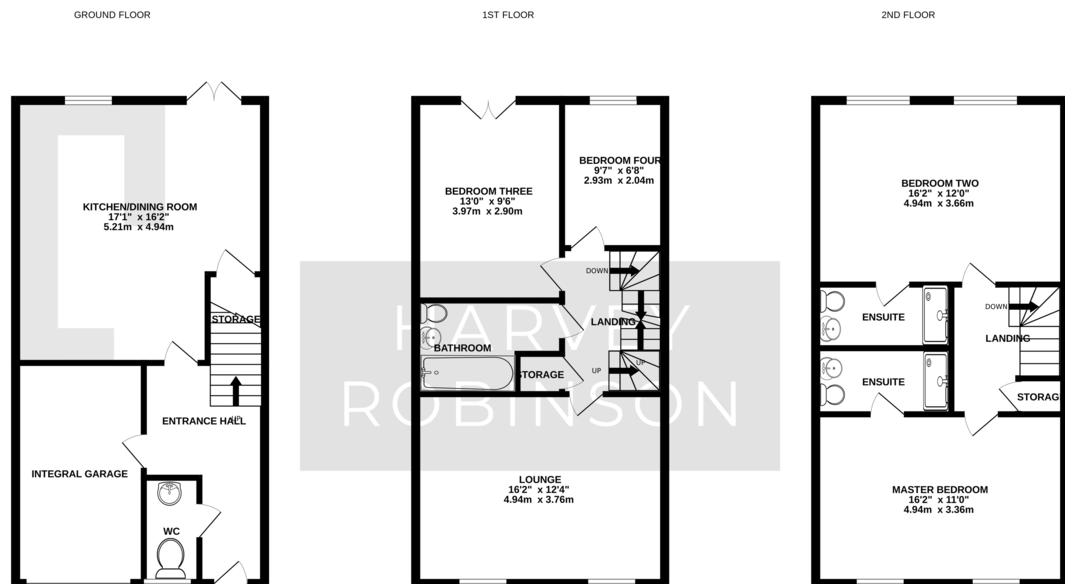


## PROPERTY SUMMARY

Harvey Robinson estate agents in St Neots are pleased to present this spacious four-bedroom townhouse situated in the desirable village of Little Paxton. The versatile three-storey layout includes an entrance hall, cloakroom, and kitchen/diner on the ground floor; a lounge, two bedrooms, and a family bathroom on the first floor; and two generous double bedrooms with vaulted ceilings and en-suite shower rooms on the second floor. Outside, the property features off-road parking, a single garage and an enclosed, low-maintenance garden. Please contact our St Neots branch to arrange a viewing.







Made with Metropix ©2025

## FAQs

Postcode for SatNav: PE19 6TD

What3Words location: ///defrost.branch.plants

Council tax: E

Estate management: Managed by FirstPort. Last year's fee for repairs/ maintenance of the estate was £235.35

How long have the vendors owned the property: 12 years

Chain: End of chain

Primary catchment: Little Paxton

Secondary catchment: Longsands

Water meter: Yes

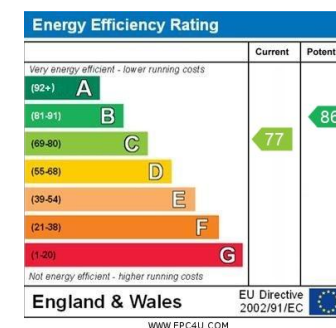
Boiler: Last serviced 2025

Loft: Boarded with light connected

Fixtures and fittings: Built in appliances:

fridge/freezer, washing machine/dryer, dishwasher.

Curtain poles, blinds, tiebacks. Shed.



Agents Note: Whilst every care has been taken to prepare these particulars, they are for guidance purposes only. All measurements are approximate and are for general guidance purposes only and whilst every care has been taken to ensure their accuracy, they should not be relied upon and potential buyers/tenants are advised to recheck the measurements

HARVEY ROBINSON

### OFFICE ADDRESS

22 Market Square, St Neots,  
Cambridgeshire, PE19 2AF

### CONTACT

01480 454040  
stneots@harveyrobinson.co.uk  
www.harveyrobinson.co.uk