



HARVEY ROBINSON

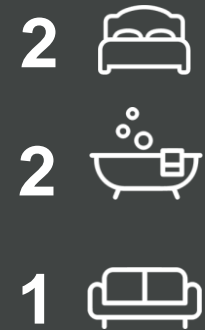
Guide Price

£300,000

Davies Croft

Biggleswade, SG18 8TW

We are delighted to present this spacious and well-maintained two double bedroom freehold coach house, situated on the highly sought-after Kings Reach development. The property offers modern and versatile living, featuring an entrance hall with internal access to the garage. Stairs lead to the first floor where you'll find a bright and generously sized open-plan kitchen/living area with integrated appliances, two double bedrooms including a master with a re-fitted en-suite, and a stylish re-fitted family bathroom. Further benefits include private driveway parking to the front, garage with power and lighting which has been cleverly divided to provide both secure storage and a gym area as well as access to a fully enclosed, landscaped rear garden. This home is perfect for first-time buyers, downsizers, or investors looking for a quality property in a thriving, well-connected location.







## FAQs

Property Tenure: Freehold

Property Built: 2017

Boiler Installed: 2017

Boiler Last Serviced: 2025

Loft: Part Boarded, Light and Ladder

Council Tax Band: B

Primary School Catchment: St Andrews East

Secondary School Catchment: Edward Peake / Stratton

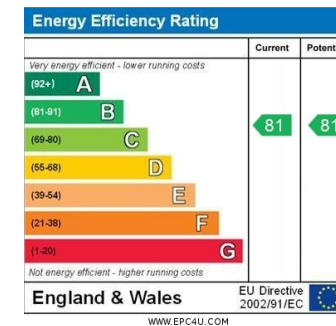
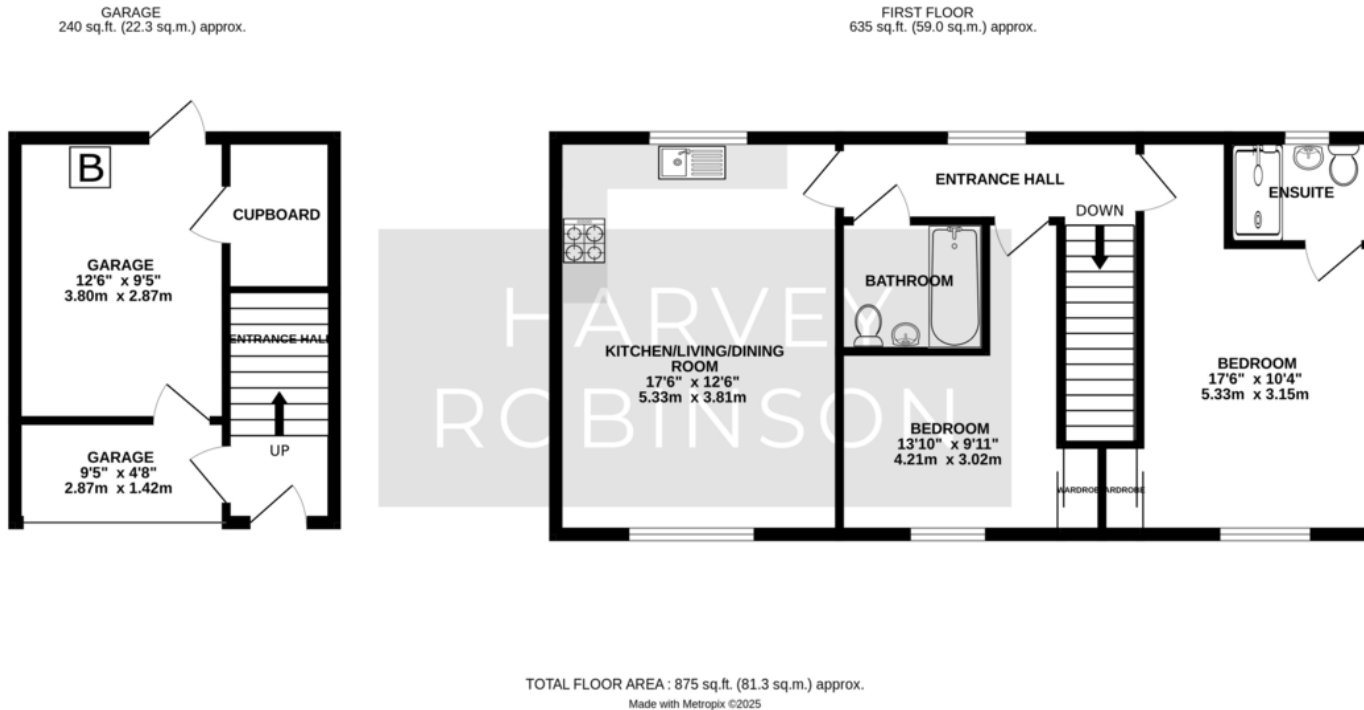
Loft Boarded: Part boarded with ladder

EPC Rating: B

What3Words Location:

///thinking.standard.ghosts

Potential Rental Income: £1350 pcm



Agents Note: Whilst every care has been taken to prepare these particulars, they are for guidance purposes only. All measurements are approximate and are for general guidance purposes only and whilst every care has been taken to ensure their accuracy, they should not be relied upon and potential buyers/tenants are advised to recheck the measurements

HARVEY ROBINSON

### OFFICE ADDRESS

5 Purcell Place, Sullivan Court,  
Biggleswade, Bedfordshire,  
SG18 8SX

### CONTACT

01767 660770  
biggleswade@harveyrobinson.co.uk  
www.harveyrobinson.co.uk