



HARVEY ROBINSON

£400,000

37 Park View

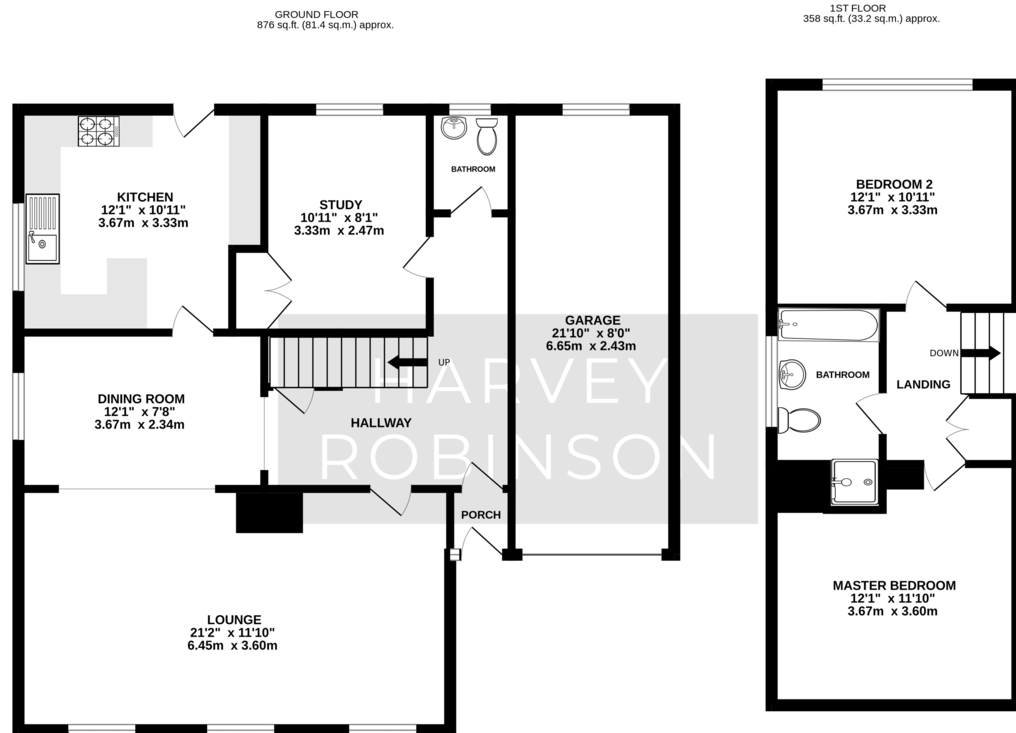
Great Stukeley, PE28 4AJ

PROPERTY SUMMARY

Harvey Robinson Estate Agents in Huntingdon are delighted to present this immaculately presented two-bedroom semi-detached home located on Park View in the highly sought-after village of Great Stukeley. Offering approximately 1200sq. ft. of versatile living space, this property is ideal for anyone looking for a beautifully maintained home in a desirable location.







TOTAL FLOOR AREA: 1234 sq.ft. (114.7 sq.m.) approx.
Made with Metropix ©2025

FAQs

Tenure: Freehold
Council Tax: Band D
EPC: TBC
Vendor Owned: 18 Years
Vendors Onward Movements: Downsizing
Rear Garden: South Facing
Primary School Catchment: Ermine Street Church Academy
Secondary School Catchment: St Peters
Boiler: Installed 2025
Loft: Part Boarded
Water Meter: Yes, on the front path
Windows Installed: 2010

Agents Note: Whilst every care has been taken to prepare these particulars, they are for guidance purposes only. All measurements are approximate and are for general guidance purposes only and whilst every care has been taken to ensure their accuracy, they should not be relied upon and potential buyers/tenants are advised to recheck the measurements

HARVEY ROBINSON

OFFICE ADDRESS

91 High Street, Huntingdon,
Cambridgeshire, PE29 3DP

CONTACT

01480 454040
huntingdon@harveyrobinson.co.uk
www.harveyrobinson.co.uk