

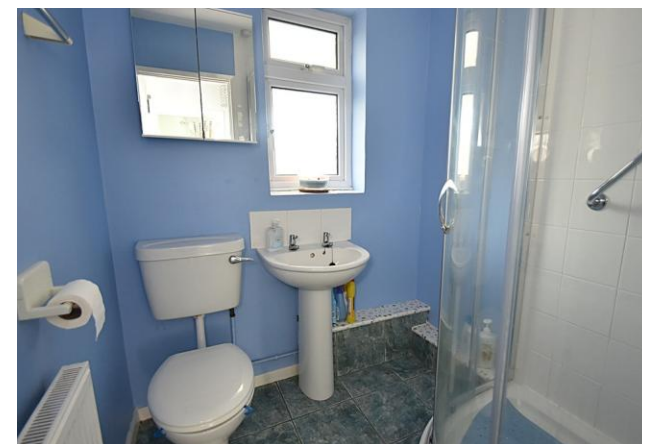


HARVEY ROBINSON

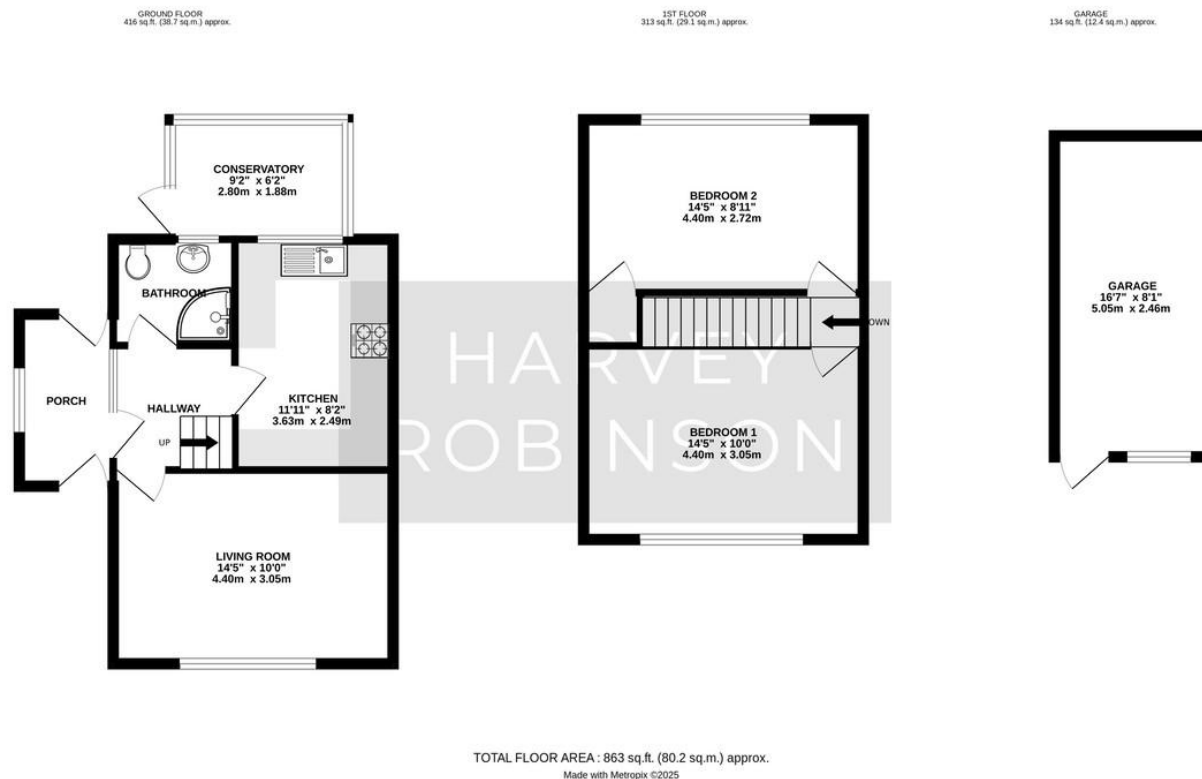
Offers In Excess Of
£250,000
Beeson Close
Little Paxton, PE19 6NE

PROPERTY SUMMARY

Harvey Robinson Estate Agents St Neots are pleased to offer this lovely two-bedroom property for sale. Located in the sought-after village of Little Paxton, this very well-presented semi-detached home offers a perfect blend of comfort, space, and convenience. Ideal for First Time Buyers or those seeking a peaceful community setting, this property is within easy reach of local amenities, well-regarded schools, and scenic riverside walks.

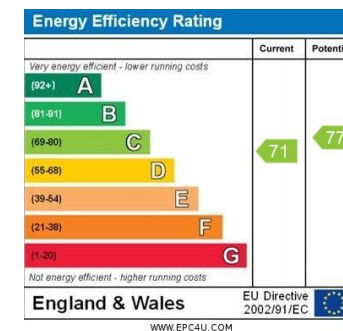






FAQs

What3Words: ///spud.prominent.diver
 Tenure: Freehold
 EPC: TBC
 Property Built: 1970's
 Onward Movements: End Of Chain
 Rear Garden: East Facing
 Primary School: Little Paxton Primary School
 Secondary School: Longsands Academy
 Council Tax: Band B
 Boiler: Fitted in 2009
 PostCode for SatNav: PE 19 6NE



Agents Note: Whilst every care has been taken to prepare these particulars, they are for guidance purposes only. All measurements are approximate and are for general guidance purposes only and whilst every care has been taken to ensure their accuracy, they should not be relied upon and potential buyers/tenants are advised to recheck the measurements

HARVEY ROBINSON

OFFICE ADDRESS

22 Market Square, St Neots,
Cambridgeshire, PE19 2AF

CONTACT

01480 454040
stneots@harveyrobinson.co.uk
www.harveyrobinson.co.uk